



# *Chain, Belt, and Sliding Guides*

## CHAIN, BELT, AND SLIDING GUIDES

# CHAIN, BELT, AND SLIDING GUIDES – TABLE OF CONTENTS

Introduction	<b>69</b>
Construction with Plastic Guides	<b>70</b>
Coefficient of Linear Thermal Expansion	<b>70</b>
Steel C Profiles	<b>71</b>
Two-Part Chain Guides – Simple Assembly	<b>72</b>
Selection Table for Steel C Profiles	<b>73</b>
Fastening of Steel C Profiles	<b>74</b>
T-Head Bolts	<b>75</b>
Special Profiles	<b>76 – 77</b>
Overview of Chain Guides	<b>78 – 79</b>
Signs and Symbols	<b>79</b>
Chain Guides for Roller Chains as per DIN 8187	<b>80 – 96</b>
	Types: T, CT, T-Duplex, CT-Duplex, T-Triplex, CT-Triplex, TU, CTU, TS, CTS, U, CU, K, CK, CKG, CKG 14H, CKG 15V, CKG 16H, CKG 17V, ETA
Chain Guides for Round Link Chains as per DIN 766/764	<b>98 – 99</b>
	Types: R, CRU, CRG, CRO
Overview of Belt Guides/Belt Guides	<b>100 – 106</b>
	Types: RR, RRC, KR, KRC, FR, FRC, FK, FKC
SNAP-TRICK®	<b>107 – 108</b>
	Overview of Types, Selection / SNAPS for All Scenarios
Profiles for Conveying and Transportation	<b>109 – 117</b>
	Sliding Guides, Type CF, Rail Guides as Insertion and Clip Profiles, Belts, Slip-On Profiles, Profiles for Slat Band Chains, Curve Guides for Slat Band Chains
Chain Racks	<b>118 – 119</b>
Product Range	<b>120</b>

# CHAIN, BELT, AND SLIDING GUIDES

## Chain guides

Where there is friction, there is wear. This is especially the case for applications where metallic materials are used. For example, for chains that run on metal guides, regular lubrication is absolutely vital. The aim is to achieve quiet, smooth running and long-term functional reliability.

Murtfeldt chain guides protect your chains. They guarantee optimum running properties at the same time as extremely high wear resistance. The tried-and-tested Material "S"<sup>®</sup> and the economical alternative "S"<sup>®</sup>1000 have ideal material properties that make them well-suited for use as guides for roller and round link chains.

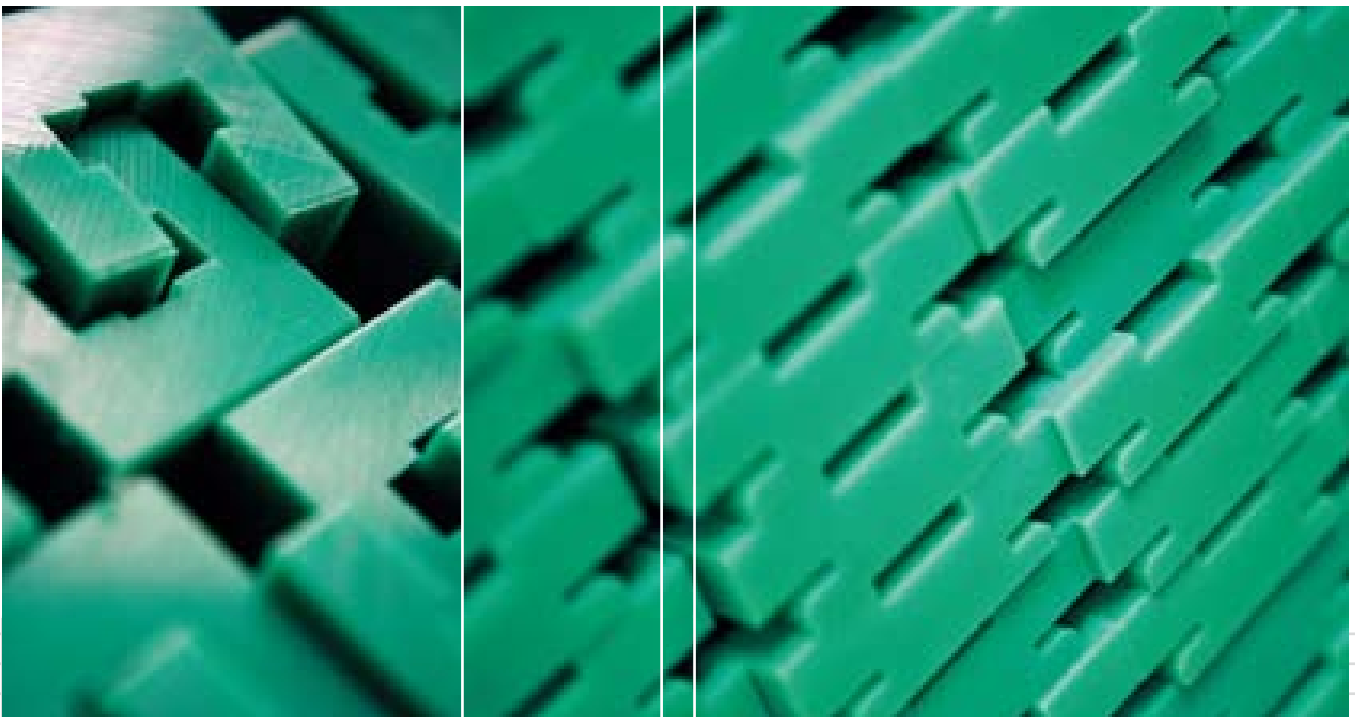
## Stock and individual production

Our warehouse stocks an extensive range of guides for roller chains that comply with DIN 8187 and round link chains that comply with DIN 766 and DIN 764.

In addition, we can manufacture economical and reliable special guides in accordance with your specifications – even in small lot sizes.

## Advantages of Murtfeldt chain guides

- High wear resistance
- Very good slide properties
- Self-lubricating (no need for any oil lubrication at all)
- Extremely impact and break resistant, even at very low temperatures (up to -250°C)
- High chemical resistance
- Vibration-reducing properties
- No moisture absorption
- No corrosion
- Approved for use in the food industry (EU and FDA)



# CONSTRUCTION WITH PLASTIC GUIDES

Construction using thermoplastics requires careful consideration beforehand. The conditions of use have a direct influence on the material selection and design of the plastic guides. You should answer the following questions in advance:

- To what static and dynamic loads will the guide be exposed?
- To what environmental factors, such as chemicals, hot or cold water, steam, or contaminants will the material be exposed?
- Will there be direct contact with foods?
- How high is the working temperature?
- How is the guide to be attached to a C profile (screwed on or inserted)?

In comparison with metallic materials, thermoplastics have a higher coefficient of linear thermal expansion.

## Calculation

When calculating the expansion, the anticipated difference between the assembly and minimum and maximum working temperatures is to be taken into account. The coefficient of linear thermal expansion of the material is used to precisely calculate the maximum elongation when the temperature rises and the reduction when the temperature drops (see formula below). The required movement space for the material can thus be taken into account before installation takes place. There are different fastening options depending on the application (see page 74).

### Formula for calculating elongation

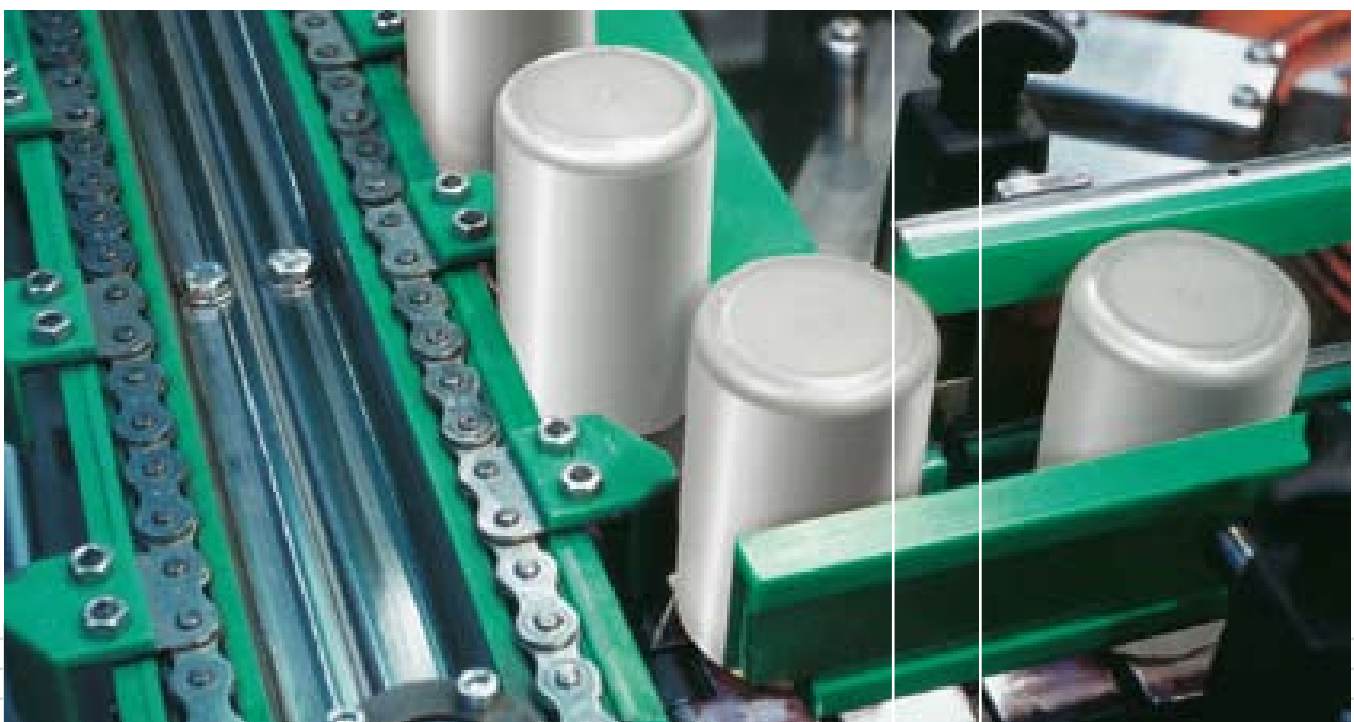
$$\Delta L = L \times \alpha \times \Delta T$$

$\Delta L$  = Elongation

$L$  = Initial length

$\alpha$  = Coefficient of linear thermal expansion

$\Delta T$  = Temperature difference in °C



# STEEL C PROFILES

Regardless of the fastening method chosen, you should design your plant so that the material can expand. The easiest and most efficient fastening method is to fasten the guide using our steel C profiles.

Unlike metals, thermoplastics are particularly predisposed to an increase/reduction in length when temperature variations occur. Mounting a guide in a steel C profile makes sense because of the freedom of movement afforded to the slide bar. This method also makes it easy to replace plastic guides.

Steel C profiles also act as stable fasteners and can be welded or screwed on as required. We recommend the use of DIN screws or special assembly using T-head bolts (see pages 74 – 75).

## AVAILABLE VARIANTS

- Galvanized (Stocked)
- Stainless steel (Stocked)
- Untreated (upon request)

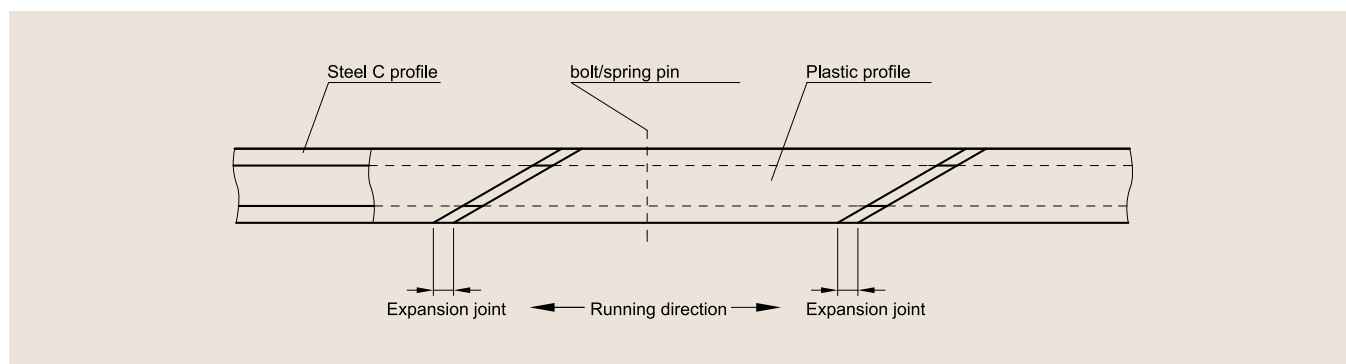
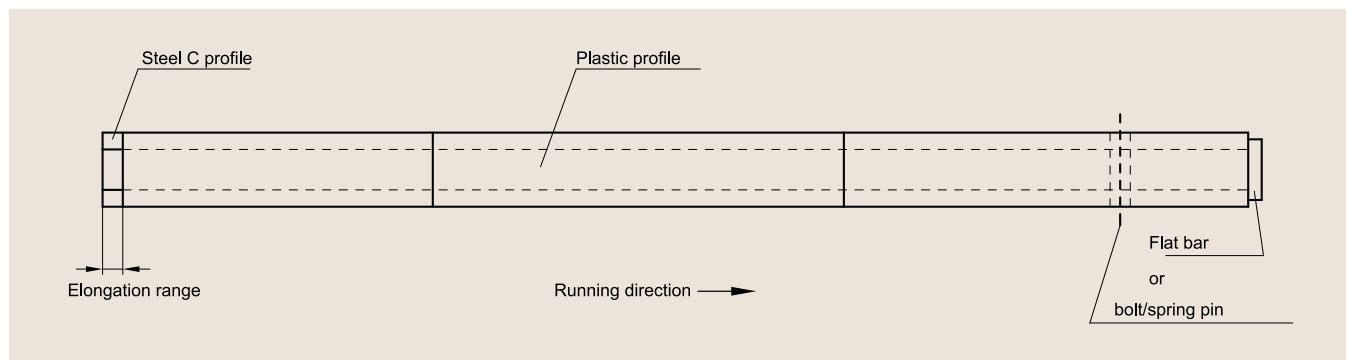
## The advantages of Murtfeldt steel C profiles

- Simple assembly/disassembly of the guide system
- Quick replacement procedure if wear occurs
- Plastic profiles only need to be secured against being pushed out once
- Simple alignment of the guide system
- No distortion occurs when mounting the steel C profile if screws are used
- Guide can increase/decrease in length if temperature variations occur



### Single or varying chain/belt/cargo direction

When expansion takes place, the plastic guide moves up in the opposite direction to the running/conveying direction. You should therefore make sure that sufficient space for the anticipated expansion is provided at the start of the plastic guide.

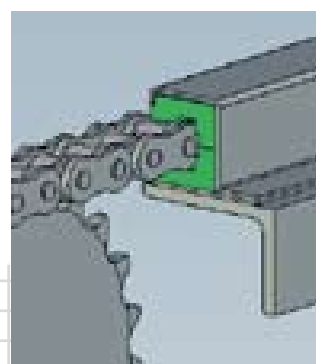
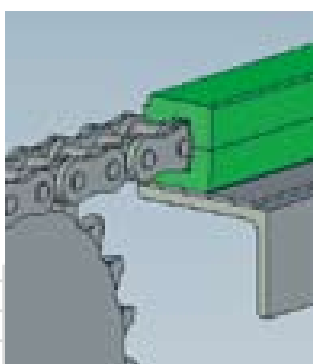
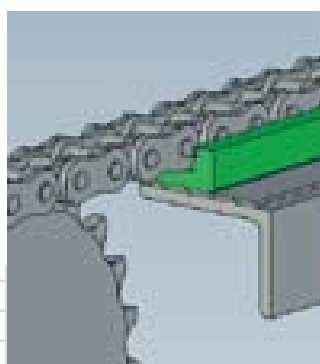
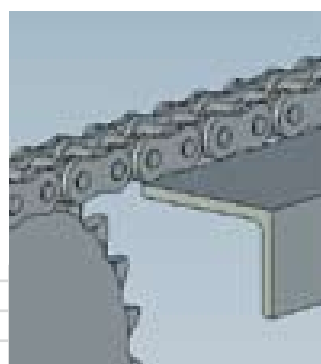
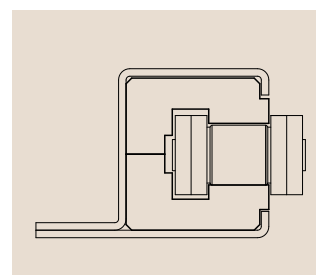
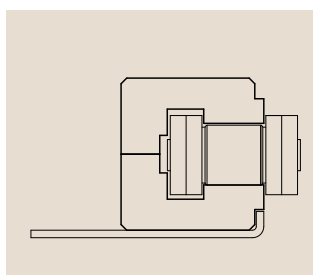
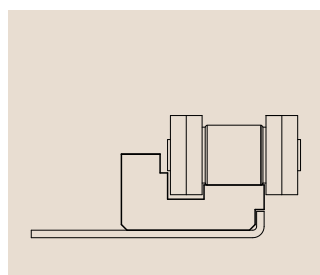
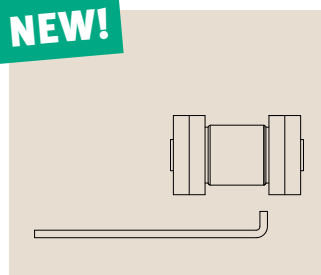


## TWO-PART CHAIN GUIDE – SIMPLE ASSEMBLY

Our two-part guides have an unbeatable advantage: The chain does not have to be detached for the assembly process. This means that in just a few steps you can retrofit or replace the

chain guide quickly, cleanly, and in a way that provides optimum protection for the chain (for more information, see page 96).

**NEW!**

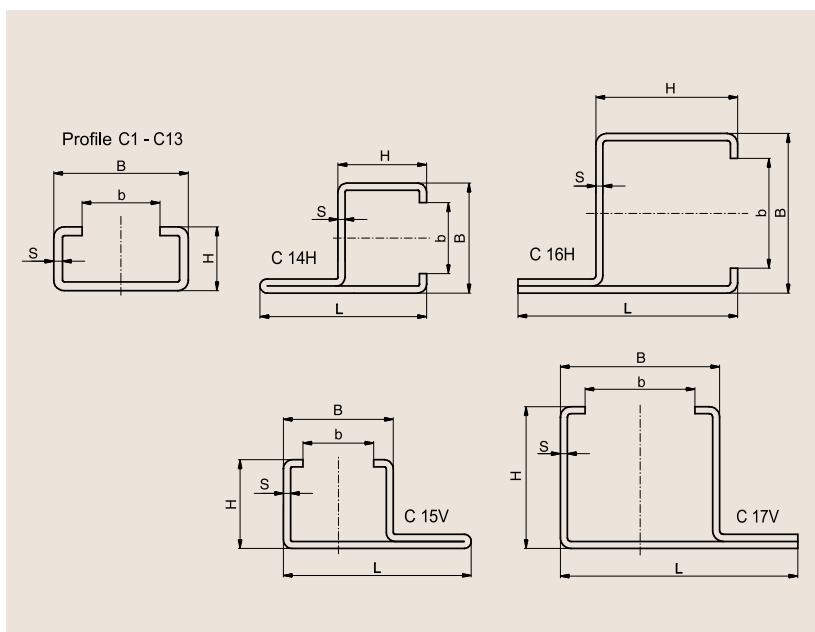


# SELECTION TABLE

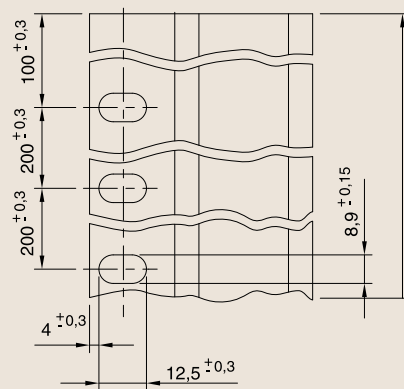
## Galvanized or stainless steel C profiles

Profile No.	B	H	b	s	L	Steel C profile length	Art. no. for galvanized variant	Art. no. for V2A variant
C1	24	5.2	17.5	1	-	2000 6000	351 020 001 351 060 001	351 020 101 351 060 101
C3	20	10	10	1.5	-	2000 6000	351 020 003 351 060 003	351 020 103 351 060 103
C4	50	10	35	2	-	2000 6000	351 020 004 351 060 004	351 020 104 351 060 104
C5	28	12	14	2	-	2000 6000	351 020 005 351 060 005	351 020 105 351 060 105
C6	80	10	65	2	-	2000 6000	351 020 006 351 060 006	351 020 106 351 060 106
C7	28	16	14	2.5	-	2000 6000	351 020 007 351 060 007	351 020 107 351 060 107
C9	38	18	22	2.5	-	2000 6000	351 020 009 351 060 009	351 020 109 351 060 109
C10	30	24	20	1.5	-	2000 6000	351 020 010 351 060 010	351 020 110 351 060 110
C11	45	40	31	2	-	2000 6000	351 020 011 351 060 011	351 020 111 351 060 111
C12	60	20	36	2.5	-	2000 6000	351 020 012 351 060 012	351 020 112 351 060 112
C13	65	55	40	3	-	2000 6000	351 020 013 351 060 013	351 020 113 351 060 113
C14 H	31	25	20	2	47	2000 6000	351 020 014 351 060 014	351 020 114 351 060 114
C15 V	31	25	20	2	53	2000 6000	351 020 015 351 060 015	351 020 115 351 060 115
C16 H <b>NEW!</b>	45	40	31	2	62	2000 6000	351 020 316 351 060 316	351 021 316 351 061 316
C17 V <b>NEW!</b>	45	40	31	2	67	2000 6000	351 020 317 351 060 317	351 021 317 351 061 317

Dimensions in mm



### C 14H, C 15V, C 16H and C 17V steel profiles with punch hole in mounting rail



Hole spacing aggregate tolerance:  
Max. 0.75 mm/m

# FASTENING OF STEEL C PROFILES

## With T-head bolts

T-head bolts provide a secure connection between your machine element and our C profiles. As a rule, a simplex connection is used. Duplex connections are available if desired. Our application technology department will be glad to advise you to ensure that you obtain the best implementation for your requirements.

---

■ Milled groove for bolt head prevents simultaneous turning of T-head bolt

---

■ Fastening of screw nuts from below (with T-head bolts)

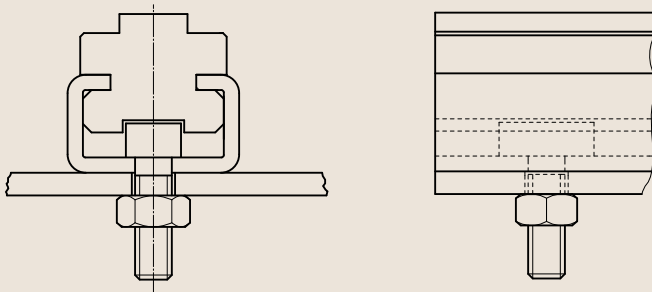
---

■ Punching and boring of required hole pattern in accordance with individual drawings

---

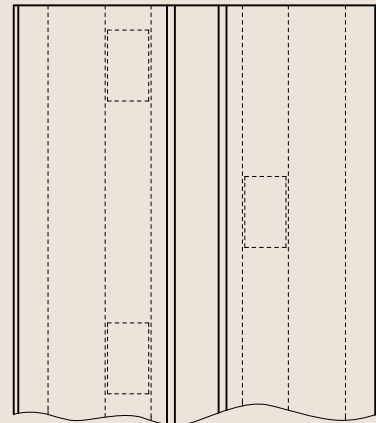
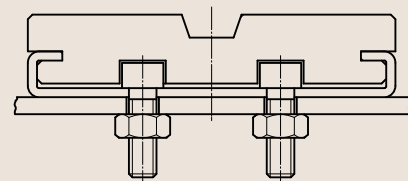
We can bore or punch individual hole patterns if you provide us with an appropriate drawing. For T-head bolt dimensions, see the following page.

### One-track fastening (standard)



### Two-track fastening

(optional for wide C6 and C12 profiles)

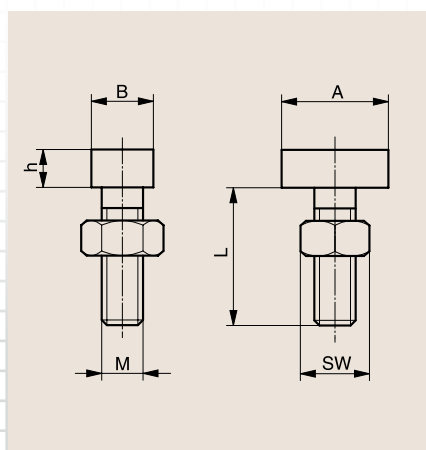


# T-HEAD BOLTS

Galvanized/stainless steel

Thread (M x L)	Suitable for these steel C profiles	A in mm	B in mm	h in mm	Material	Article no.	Type
M6x20	C1, C3, C4, C5, C6, C7, C9, C10, C11, C12, C13	18.0	9.5	4	Galvanized	352010001	-
M6x20	C1, C4, C5, C6, C7, C9, C12	15.5	9.0	6	Galvanized	352010005	20/12
M6x30	C1, C4, C5, C6, C7, C9, C12	15.5	9.0	6	Galvanized	352010003	20/12
M6x40	C1, C4, C5, C6, C7, C9, C12	15.5	9.0	6	Galvanized	352010004	20/12
M8x20	C4, C6, C7, C9, C12	15.5	9.0	6	Galvanized	352010008	20/12
M8x30	C4, C6, C7, C9, C12	15.5	9.0	6	Galvanized	352010006	20/12
M8x40	C4, C6, C7, C9, C12	15.5	9.0	6	Galvanized	352010007	20/12
M8x20	C4, C6, C7, C9, C12	23.0	11.0	6	Galvanized	352010011	28/15
M8x30	C4, C6, C7, C9, C12	23.0	11.0	6	Galvanized	352010019	28/15
M8x40	C4, C6, C7, C9, C12	23.0	11.0	6	Galvanized	352010014	28/15
M10x20	C4, C6, C7, C9, C11, C12, C13	23.0	11.0	7	Galvanized	352010020	28/15
M10x30	C4, C6, C7, C9, C11, C12, C13	23.0	11.0	7	Galvanized	352010012	28/15
M10x40	C4, C6, C7, C9, C11, C12, C13	23.0	11.0	7	Galvanized	352010013	28/15
M10x20	C6, C9, C12	31.0	13.5	9	Galvanized	352010015	38/17
M10x30	C6, C9, C12	31.0	13.5	9	Galvanized	352010016	38/17
M12x40	C6, C11, C12, C13	31.0	13.5	9	Galvanized	352010017	38/17
M6x20	C1, C3, C4, C5, C6, C7, C9, C10, C11, C12, C13	18.0	9.5	4	V2A	352010002	-
M8x20	C4, C6, C7, C9, C12	15.5	9.0	6	V2A	352010025	20/12
M8x30	C4, C6, C7, C9, C12	15.5	9.0	6	V2A	352010026	20/12

Please speak with our application technology department to determine the best T-head screw for your needs. We can provide the appropriate models including nuts for one-track and two-track connections.

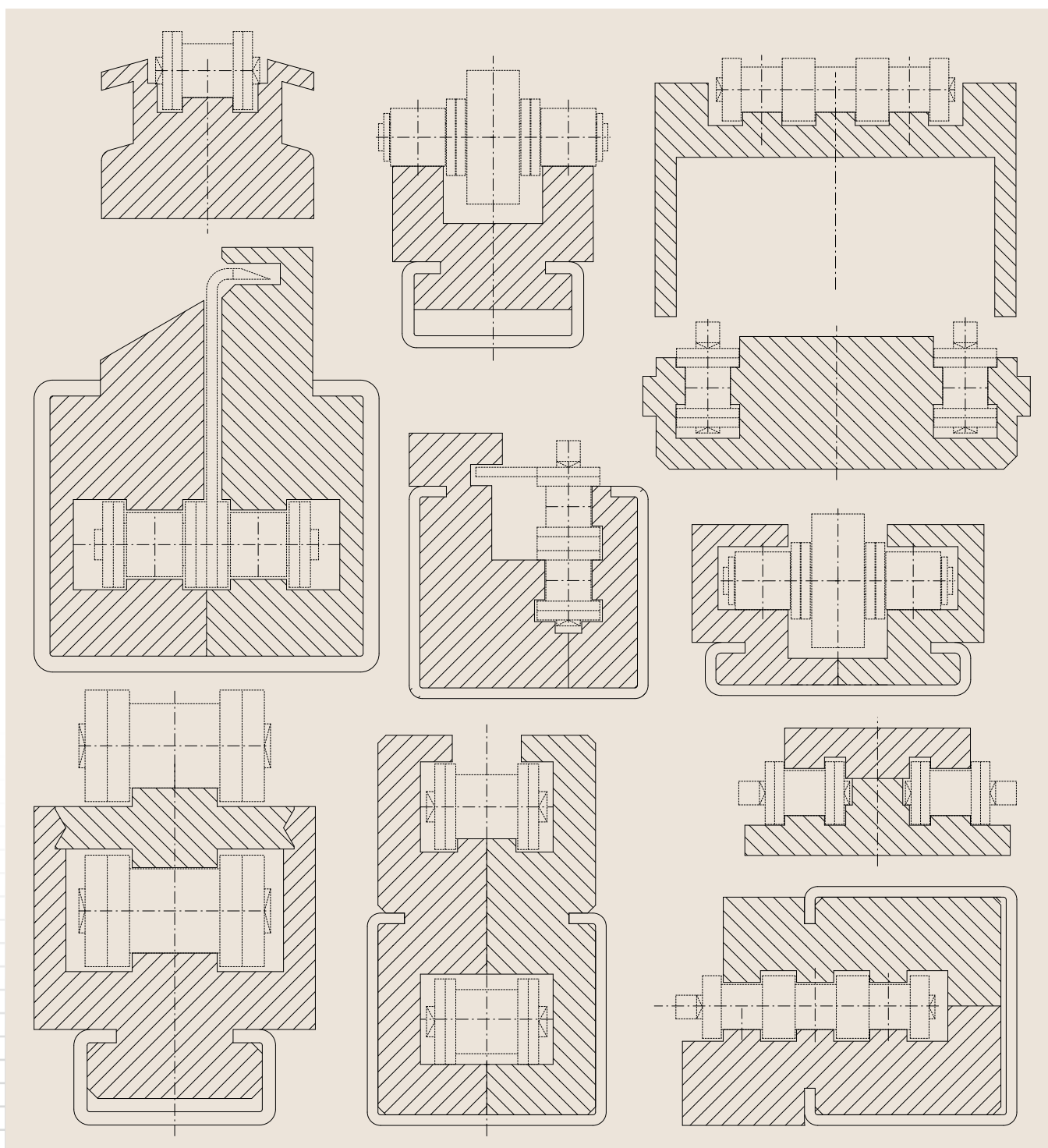


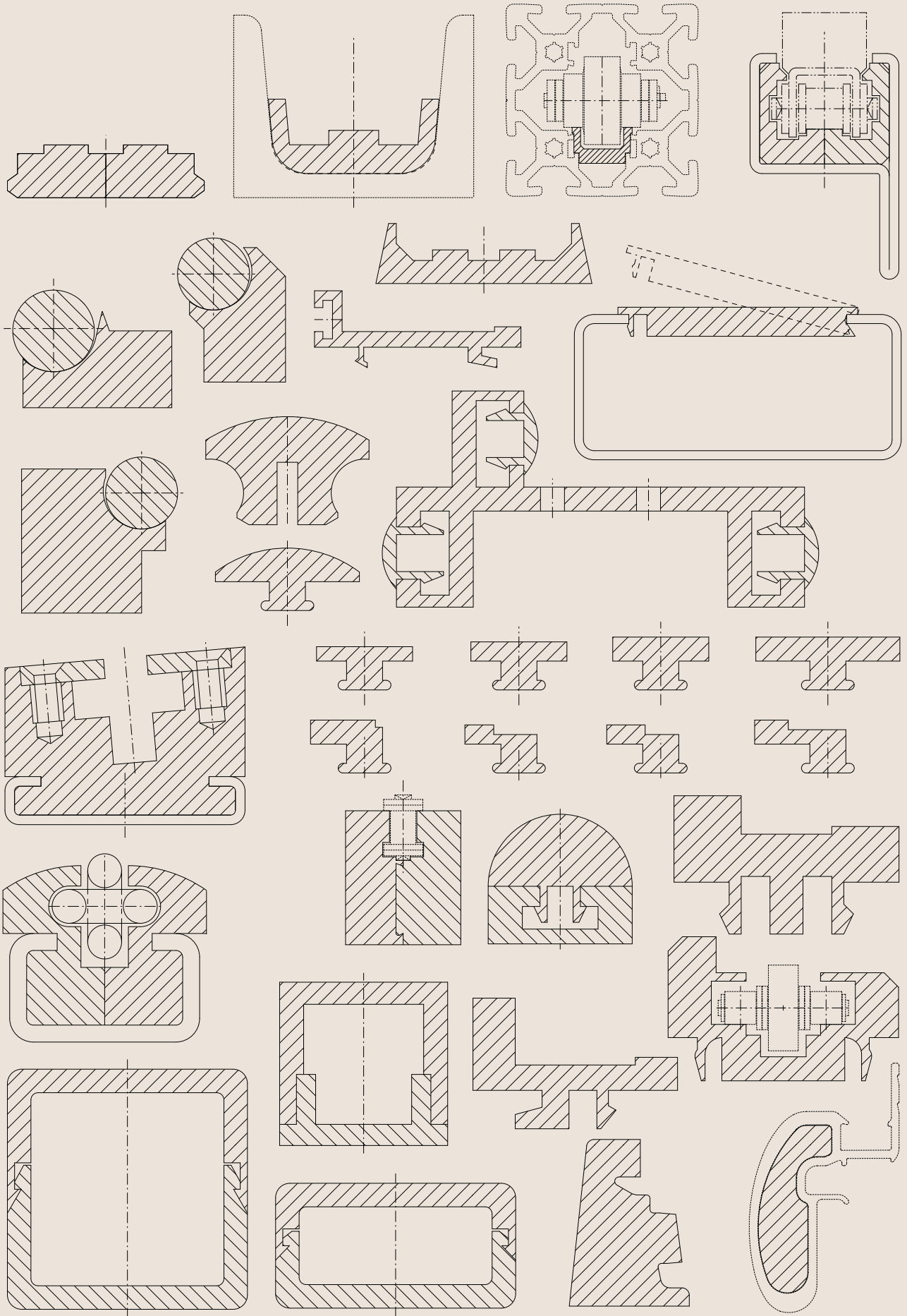
## SPECIAL PROFILES

### When the standard designs are not enough

Our standard range of profiles provides a large number of solutions for fitting out your machines. However, if the design you require is not part of our range, we are happy to produce it in accordance with your individual specifications. Please contact our application technology department or one of our field staff.

**We also offer you the opportunity to work on documents, drawings, and construction plans online together with our employees.**





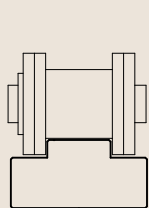
# OVERVIEW OF CHAIN GUIDES

## For roller chains (DIN 8187) and round link chains (DIN 766/764)

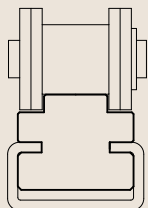
Murtfeldt offers an extensive standard range of guides for roller chains. We have a total of 20 different types of guide for roller chains and four for round link chains. You can also choose

between our high-quality Original Material "S"<sup>®</sup> Green and our more economical Material "S"<sup>®</sup> 1000 Green.

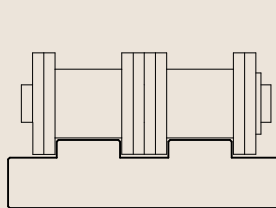
### Chain guides for roller chains as per DIN 8187 (DIN 8188 catalogue on request)



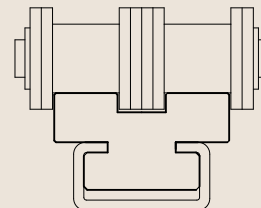
Type T – page 80



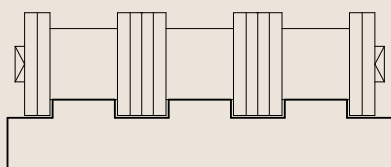
Type CT – page 81



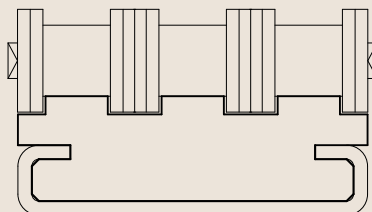
Type T-Duplex – page 82



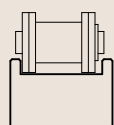
Type CT-Duplex – page 83



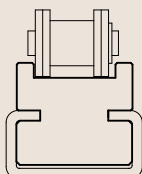
Type T-Triplex – page 84



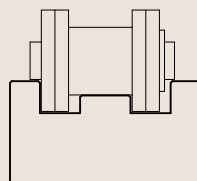
Type CT-Triplex – page 85



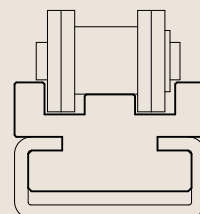
Type TU – page 86



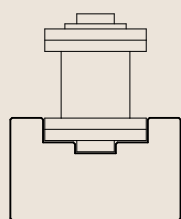
Type CTU – page 86



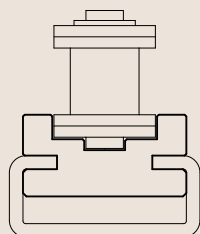
Type TS – page 87



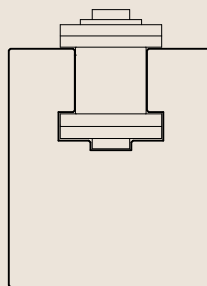
Type CTS – page 88



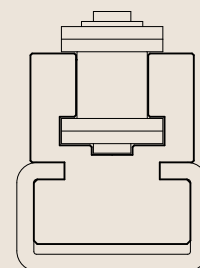
Type U – page 89



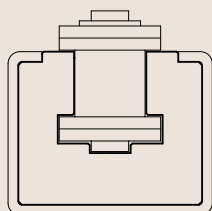
Type CU – page 90



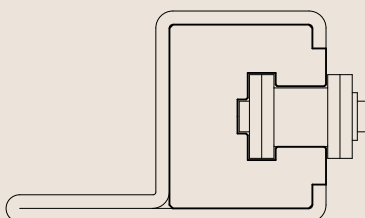
Type K – page 91



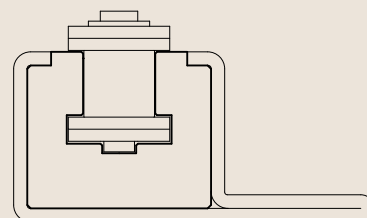
Type CK – page 92



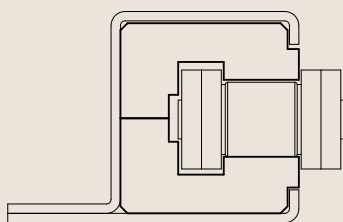
Type CKG – page 93



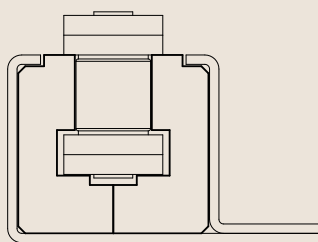
Type CKG 14H – page 94



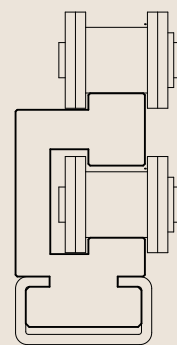
Type CKG 15V – page 95



Type CKG16H – page 96

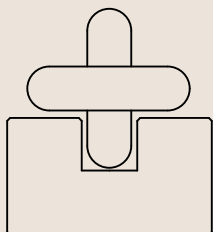


Type CKG17V – page 96

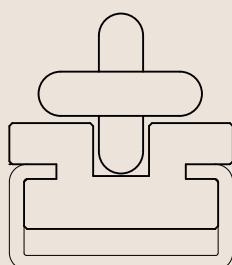


Type ETA – page 97

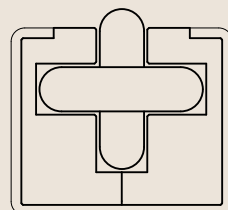
### Chain guides for round link chains as per DIN 766/764



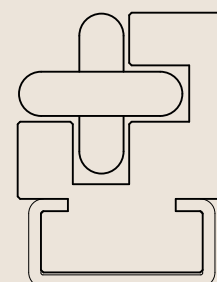
Type R – page 98



Type CRU – page 98



Type CRG – page 99

















Type CRO – page 99

## SIGNS AND SYMBOLS

The products described on the following pages have been developed to meet different requirements and diverse working environments.

The main material and availability properties are illustrated by the pictograms that appear next to each product.

Standard		Variable – optional possibilities
 Original Material "S"® Green	 Length of plastic guide and steel C profile in mm	 Ex stock in Material "S"® 1000 Green
 Original Material "S"® Black Antistatic	 Standard design in galvanized steel	 In intermediate dimensions and other materials if required
 Medium tolerances on plastic profile section as per DIN ISO 2768	 Only suitable for outer facing connecting link	 6,000mm steel profile length possible
 Length tolerance Plastic guide +0/+7mm Steel C profile +0/+40mm	 Profile section for two-part design	 Available ex stock in 1.4301 (V2A)
 For use in explosion hazard areas (manufacturer's declaration)	 Profile section for two-part design	

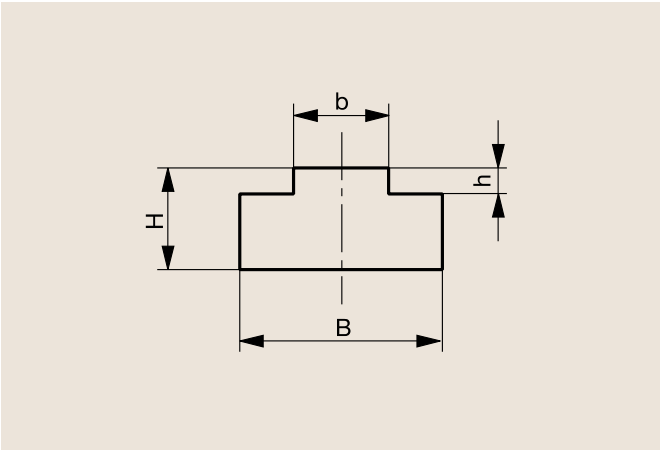
# Chain Guides for Roller Chains as per DIN 8187

## TYPE T



DIN 8187 chain no.	Chain dimensions	B	H	b	h	Article no.	Availability
06B-1	3/8" x 7/32"	15	10	5.4	1.5	221 010 002	●
083-1	1/2" x 3/16"	15	10	4.5	1.5	221 010 003	●
085-1	1/2" x 1/4"	20	10	6.2	2.2	221 010 004	○
08B-1	1/2" x 5/16"	20	10	7.4	2.2	221 010 005	●
08B-1	1/2" x 5/16"	20	15	7.4	2.2	221 010 006	●
08B-1	1/2" x 5/16"	20	20	7.4	2.2	221 010 007	●
08B-1	1/2" x 5/16"	20	30	7.4	2.2	221 010 008	●
-	5/8" x 1/4"	20	10	6.2	2.6	221 010 009	○
10B-1	5/8" x 3/8"	20	10	9.3	2.6	221 010 010	●
10B-1	5/8" x 3/8"	20	15	9.3	2.6	221 010 011	●
10B-1	5/8" x 3/8"	20	20	9.3	2.6	221 010 012	○
10B-1	5/8" x 3/8"	20	30	9.3	2.6	221 010 013	○
12B-1	3/4" x 7/16"	25	10	11.3	2.4	221 010 014	●
12B-1	3/4" x 7/16"	25	15	11.3	2.4	221 010 015	●
12B-1	3/4" x 7/16"	25	20	11.3	2.4	221 010 016	●
12B-1	3/4" x 7/16"	25	30	11.3	2.4	221 010 017	●
16B-1	1" x 17mm	40	15	16.0	3.5	221 010 018	●
16B-1	1" x 17mm	40	20	16.0	3.5	221 010 019	●
16B-1	1" x 17mm	40	30	16.0	3.5	221 010 020	●
20B-1	1 1/4" x 3/4"	45	15	18.0	4.2	221 010 021	●
24B-1	1 1/2" x 1"	60	15	24.0	5.5	221 010 022	●
28B-1	1 3/4" x 31mm	75	20	30.0	6.8	221 010 023	○
32B-1	2" x 31mm	80	20	30.0	7.7	221 010 024	○

● Stocked   ○ Available within 10 days   Dimensions in mm

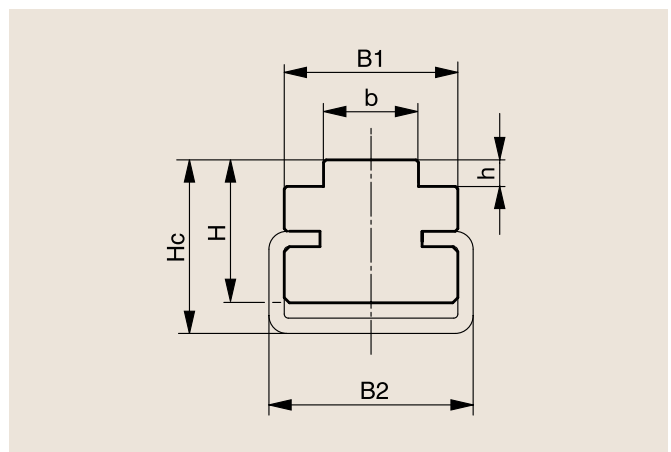


# TYPE CT



DIN 8187 chain no.	Chain dimensions	C profile type	B1	B2	H	Hc	b	h	Article no.	Availability
06B-1	3/8" x 7/32"	C3	17	20	14	17	5.4	1.5	221 210 015 351 020 003	○ ○
083-1	1/2" x 3/16"	C3	17	20	14	17	4.5	1.5	221 210 002 351 020 003	○ ○
085-1	1/2" x 1/4"	C3	17	20	14	17	6.2	2.2	221 210 003 351 020 003	○ ○
08B-1	1/2" x 5/16"	C1	20	24	10	11	7.4	2.2	221 210 001 351 020 001	● ●
08B-1	1/2" x 5/16"	C3	17	20	14	17	7.4	2.2	221 210 004 351 020 003	● ●
-	5/8" x 1/4"	C3	17	20	14	17	6.2	2.6	221 210 005 351 020 003	○ ●
10B-1	5/8" x 3/8"	C3	17	20	14	17	9.3	2.6	221 210 006 351 020 003	● ●
12B-1	3/4" x 7/16"	C3	20	20	14	17	11.3	2.4	221 210 007 351 020 003	● ●
12B-1	3/4" x 7/16"	C5	24	28	14	18	11.3	2.4	221 210 008 351 020 005	● ●
16B-1	1" x 17mm	C5	24	28	14	18	16	3.5	221 210 009 351 020 005	● ●
20B-1	1 1/4" x 3/4"	C5	28	28	14	18	18	4.2	221 210 010 351 020 005	● ●
24B-1	1 1/2" x 1"	C9	33	38	23	30	24	5.5	221 210 011 351 020 009	○ ○
28B-1	1 3/4" x 31mm	C9	38	38	23	30	30	6.8	221 210 012 351 020 009	○ ○
32B-1	2" x 31mm	C9	38	38	23	30	30	7.7	221 210 013 351 020 009	○ ○
32B-1	2" x 31mm	C12	60	60	25	35	30	7.7	221 210 014 351 020 012	○ ○

● Stocked ○ Available within 10 days Dimensions in mm

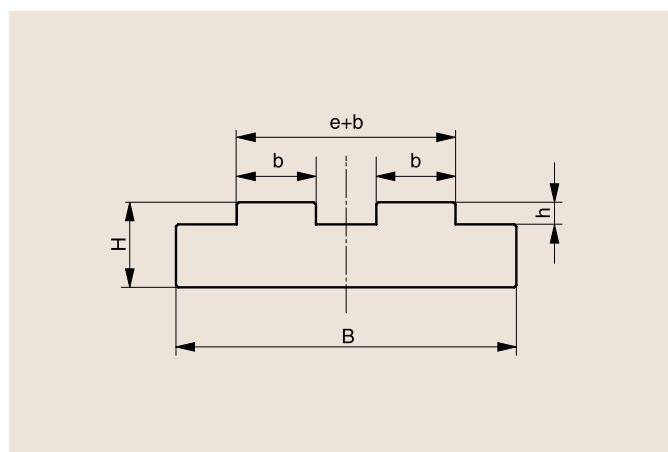


# TYPE T-DUPLEX



DIN 8187 chain no.	Chain dimensions in inches	B	H	b	h	e+b	Article no.	Availability
06B-2	3/8" x 7/32"	25.0	10	5.3	1.5	15.6	221 010 025	●
08B-2	1/2" x 5/16"	35.0	10	7.2	2.2	21.2	221 010 026	●
08B-2	1/2" x 5/16"	35.0	15	7.2	2.2	21.2	221 010 027	●
08B-2	1/2" x 5/16"	35.0	20	7.2	2.2	21.2	221 010 028	○
08B-2	1/2" x 5/16"	35.0	30	7.2	2.2	21.2	221 010 029	○
10B-2	5/8" x 3/8"	40.0	10	9.0	2.6	25.6	221 010 030	●
12B-2	3/4" x 7/16"	45.0	15	10.9	2.4	30.4	221 010 031	●
12B-2	3/4" x 7/16"	45.0	10	10.9	2.4	30.4	221 010 032	○
16B-2	1" x 17mm	47.8	15	15.8	3.5	47.8	221 010 033	●
20B-2	1 1/4" x 3/4"	54.7	15	18.2	4.2	54.7	221 010 034	○
24B-2	1 1/2" x 1"	72.0	20	23.6	5.5	72.0	221 010 035	○
28B-2	1 3/4" x 31mm	88.4	25	28.8	6.8	88.4	221 010 036	○
32B-2	2" x 31mm	87.4	30	28.8	7.7	87.4	221 010 037	○

● Stocked ○ Available within 10 days Dimensions in mm

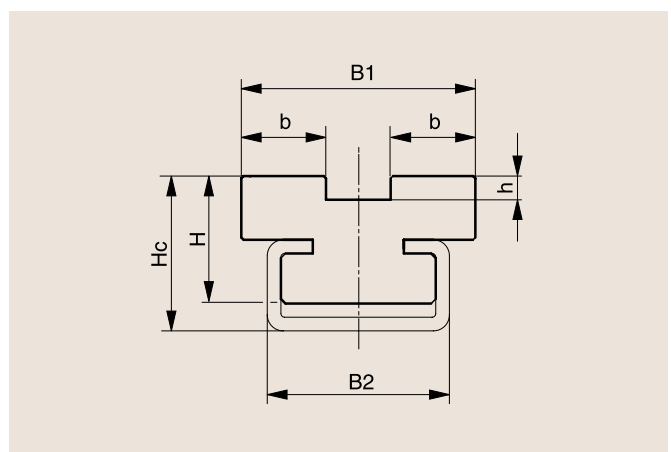


## TYPE CT-DUPLEX



DIN 8187 chain no.	Chain dimensions in inches	C profile type	B1	B2	H	Hc	b	h	Article no.	Availability
06B-2	3/8" x 7/32"	C3	15.6	20	14	17	5.3	1.5	221 210 022 351 020 003	●
08B-2	1/2" x 5/16"	C3	21.2	20	14	17	7.2	2.2	221 210 016 351 020 003	●
10B-2	5/8" x 3/8"	C3	25.6	20	14	17	9.0	2.6	221 210 017 351 020 003	●
12B-2	3/4" x 7/16"	C5	30.4	28	15	20	10.9	2.4	221 210 018 351 020 005	●
16B-2	1" x 17mm	C9	47.8	38	20	27	15.8	3.5	221 210 019 351 020 009	○
20B-2	1 1/4" x 3/4"	C12	54.7	60	22	30	18.2	4.2	221 210 020 351 020 012	○
24B-2	1 1/2" x 1"	C12	72.0	60	25	35	23.6	5.5	221 210 021 351 020 012	○

● Stocked ○ Available within 10 days Dimensions in mm



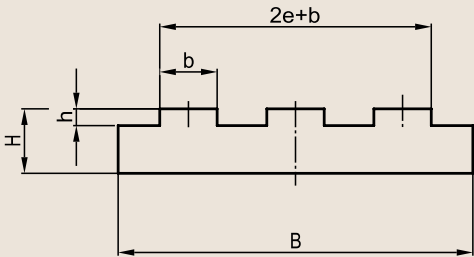
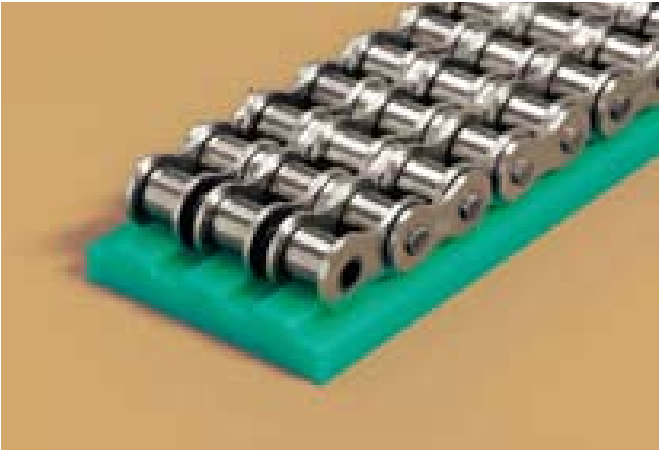
**NEW!**

# TYPE T-TRIPLEX



DIN 8187 chain no.	Chain dimensions in inches	B	H	b	h	2e+b	Article no.	Availability
06B-3	3/8" x 7/32"	35.0	10	5.3	1.5	25.9	221 010 038	○
08B-3	1/2" x 5/16"	45.0	10	7.1	2.2	34.9	221 010 039	○
10B-3	5/8" x 3/8"	55.0	10	8.9	2.6	42.1	221 010 040	○
12B-3	3/4" x 7/16"	60.0	15	10.7	2.4	49.7	221 010 041	○
16B-3	1" x 17mm	79.5	20	15.7	3.5	79.5	221 010 042	○
20B-3	1 1/4" x 3/4"	91.0	20	18.0	4.2	91.0	221 010 043	○
24B-3	1 1/2" x 1"	120.0	25	23.4	5.5	120.0	221 010 044	○

● Stocked   ○ Available within 10 days   Dimensions in mm



**NEW!**

# TYPE CT-TRIPLEX

"S"

DIN 2768



2000

galvanized

"S" 1000

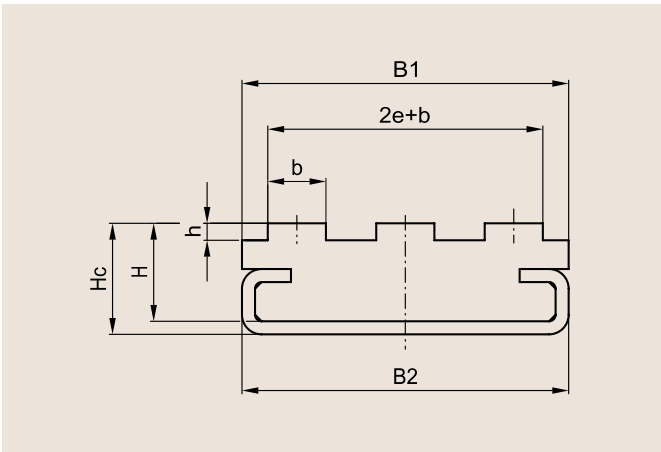


6000

V2A

DIN 8187 chain no.	Chain dimensions in inches	C profile type	B1	B2	H	Hc	b	h	2e + b	Article no.	Availability
06B-3	3/8" x 7/32"	C5	30.0		15	20	5.3	1.5	25.9	221 210 023	○
				28						351 020 005	●
08B-3	1/2" x 5/16"	C5	34.9		15	20	7.1	2.2	34.9	221 210 024	○
				28						351 020 005	●
10B-3	5/8" x 3/8"	C4	50.0		15	17	8.9	2.6	42.1	221 210 025	○
				50						351 020 004	●
12B-3	3/4" x 7/16"	C4	49.7		18	20	10.7	2.4	49.7	221 210 026	○
				50						351 020 004	●
16B-3	1" x 17mm	C6	79.5		20	22	15.7	3.5	79.5	221 210 027	○
				80						351 020 006	●
20B-3	1 1/4" x 3/4"	C6	91.0		20	22	18.0	4.2	91.0	221 210 028	○
				80						351 020 006	●

● Stocked ○ Available within 10 days Dimensions in mm

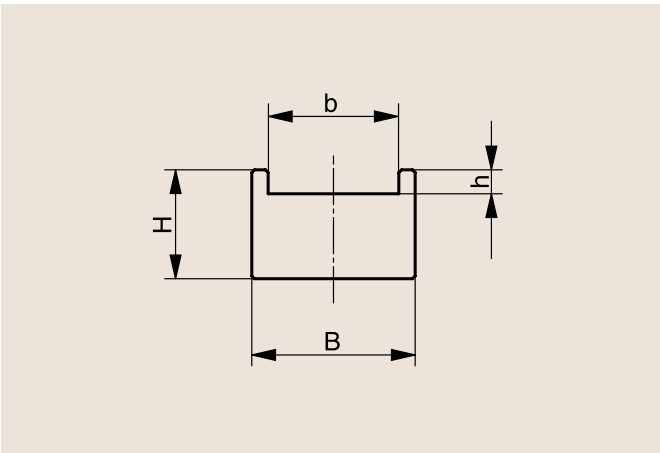
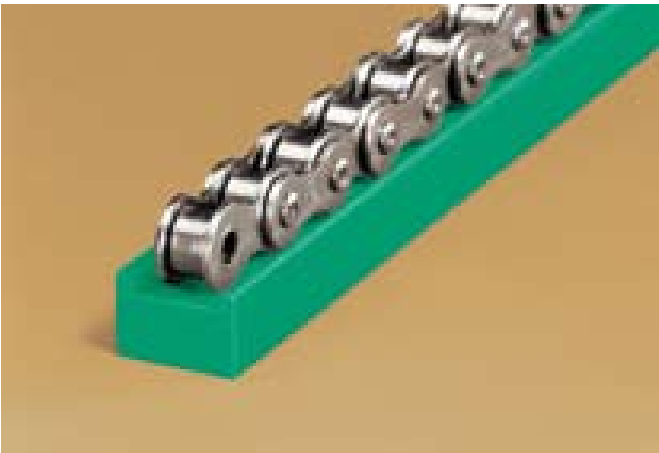


# TYPE TU



DIN 8187 chain no.	Chain dimensions in inches	B	H	b	h	Article no.	Availability
-	3/8" x 5/32"	15	10	12	2.2	221 110 010	●
083-1	1/2" x 3/16"	15	10	12	2.2	221 110 011	●

● Stocked   ○ Available within 10 days   Dimensions in mm

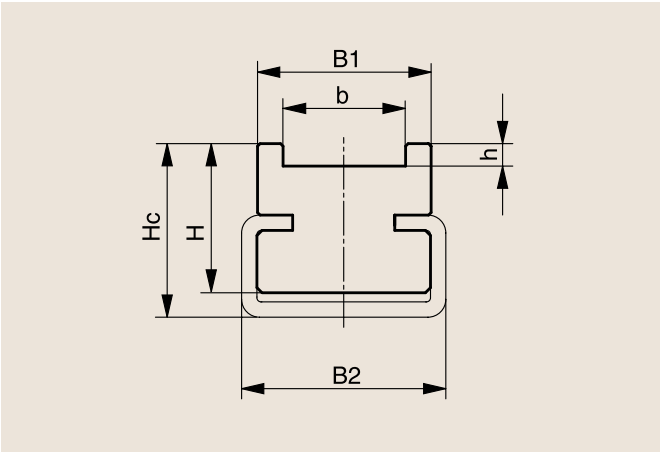
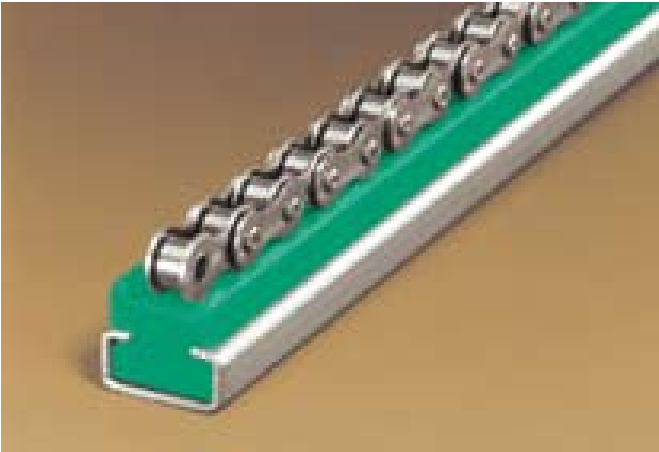


# TYPE CTU



DIN 8187 chain no.	Chain dimensions in inches	C profile type	B1	B2	H	Hc	b	h	Article no.	Availability
-	3/8" x 5/32"	C3	17	20	14	17	12	2.2	221 310 010	●
									351 020 003	●
083-1	1/2" x 3/16"	C3	17	20	14	17	12	2.2	221 310 010	●
									351 020 003	●

● Stocked   ○ Available within 10 days   Dimensions in mm

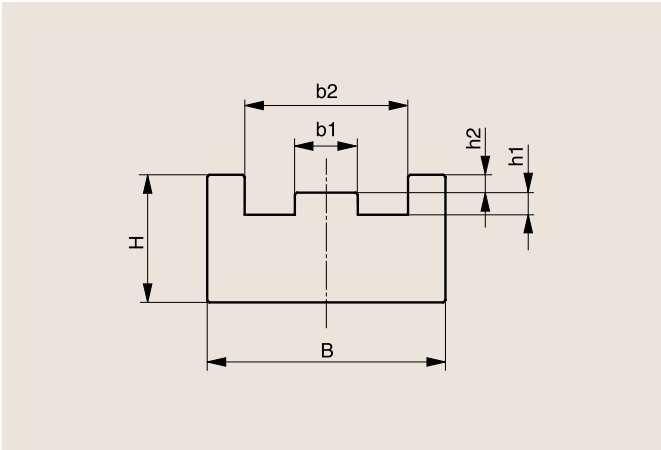
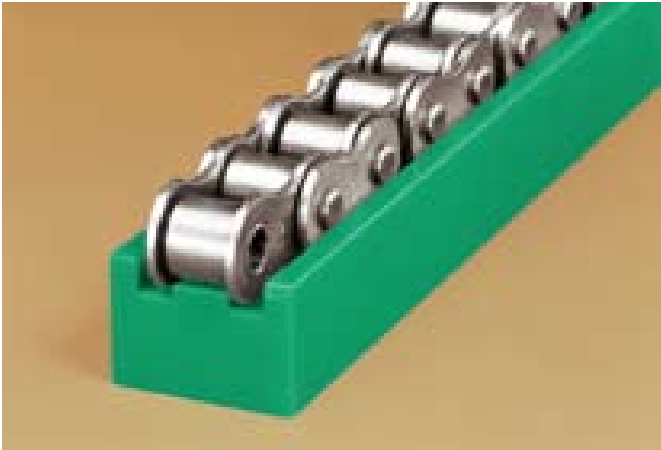


TYPE TS



DIN 8187 chain no.	Chain dimensions in inches	B	H	b1	b2	h1	h2	Article no.	Availability
06B-1	3/8" x 7/32"	20	10	3.8	13.0	1.5	1.1	221 110 001	●
083-1	1/2" x 3/16"	20	10	3.0	12.4	1.6	1.4	221 110 002	○
085-1	1/2" x 1/4"	22	10	4.5	15.1	2.2	1.6	221 110 003	●
08B-1	1/2" x 5/16"	25	15	5.7	16.3	2.2	1.6	221 110 004	●
-	5/8" x 1/4"	25	15	4.1	16.1	2.6	2.1	221 110 005	○
10B-1	5/8" x 3/8"	28	15	7.4	19.2	2.6	2.1	221 110 006	●
12B-1	3/4" x 7/16"	30	20	9.2	21.8	2.4	2.8	221 110 007	●
16B-1	1" x 17mm	42	25	15.0	35.0	3.5	3.3	221 110 008	○
20B-1	1 1/4" x 3/4"	50	25	16.8	40.0	4.2	4.0	221 110 009	○

● Stocked   ○ Available within 10 days   Dimensions in mm

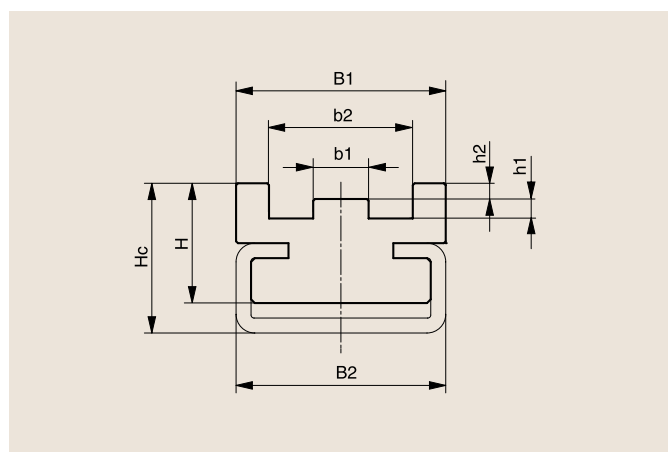


# TYPE CTS



DIN 8187 chain no.	Chain dimensions in inches	C profile type	B1	B2	H	Hc	b1	b2	h1	h2	Article no.	Availability
06B-1	3/8" x 7/32"	C3	20	20	14	17	3.8	13.0	1.5	1.1	221 310 001 351 020 003	● ●
083-1	1/2" x 3/16"	C3	20	20	14	17	3.0	12.4	1.6	1.4	221 310 002 351 020 003	○ ○
085-1	1/2" x 1/4"	C3	22	20	14	17	4.5	15.1	2.2	1.6	221 310 003 351 020 003	○ ○
08B-1	1/2" x 5/16"	C3	25	20	16	20	5.7	16.3	2.2	1.6	221 310 004 351 020 003	● ●
-	5/8" x 1/4"	C3	25	20	16	20	4.1	16.1	2.6	2.1	221 310 005 351 020 003	○ ○
10B-1	5/8" x 3/8"	C5	28	28	16	20	7.4	19.2	2.6	2.1	221 310 006 351 020 005	● ●
12B-1	3/4" x 7/16"	C5	30	28	18	22	9.2	21.8	2.4	2.8	221 310 007 351 020 005	● ●
16B-1	1" x 17mm	C9	42	38	25	30	15.0	35.0	3.5	3.3	221 310 008 351 020 009	● ●
20B-1	1 1/4" x 3/4"	C9	50	38	30	35	16.8	40.0	4.2	4.0	221 310 009 351 020 009	● ●

● Stocked ○ Available within 10 days Dimensions in mm

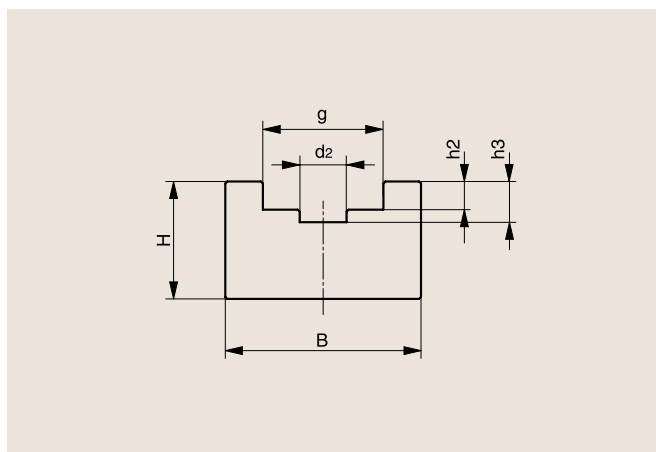


# TYPE U



DIN 8187 chain no.	Chain dimensions in inches	B	H	d2	g	h2	h3	Article no.	Availability
-	3/8" x 5/32"	20	15	4	9.4	2.8	4.2	221 110 012	○
06B-1	3/8" x 7/32"	20	15	4	9.4	2.8	4.2	221 110 013	●
08B-1	1/2" x 3/16"	20	15	5	10.8	2.3	3.8	221 110 014	○
g=12.8mm	1/2" x 1/4"	25	15	5	12.8	3.5	5.0	221 110 015	○
08B-1	1/2" x 5/16"	25	15	5	12.8	3.5	5.0	221 110 017	●
-	5/8" x 1/4"	25	15	6	15.4	3.6	5.2	221 110 016	○
085-1	1/2 x 1/4"	20	15	5	11.8	3.2	4.7	221 110 018	●
10B-1	5/8" x 3/8"	25	15	6	15.4	3.6	5.0	221 110 019	●
12B-1	3/4" x 7/16"	25	20	7	17.0	3.9	5.7	221 110 020	●
16B-1	1" x 17mm	33	25	10	24.0	8.4	10.6	221 110 021	●
20B-1	1 1/4" x 3/4"	55	25	11	28.0	10.0	12.2	221 110 022	○
24B-1	1 1/2" x 1"	60	30	16	36.6	13.0	16.0	221 110 023	○
28B-1	1 3/4" x 31mm	65	30	17	40.0	16.0	18.0	221 110 024	○
32B-1	2" x 31mm	70	30	20	44.6	16.0	20.0	221 110 025	○

● Stocked ○ Available within 10 days Dimensions in mm

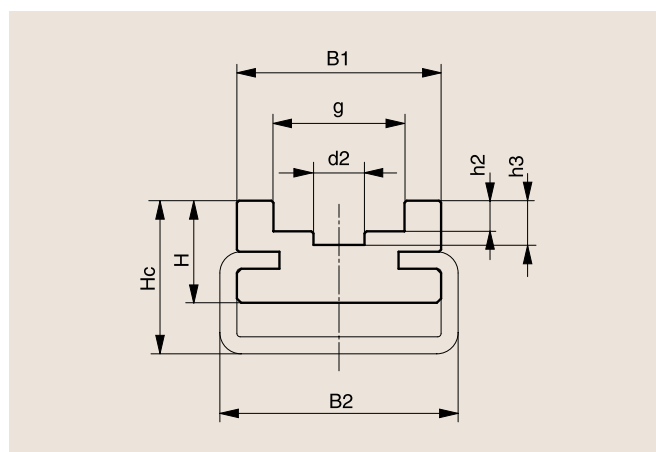
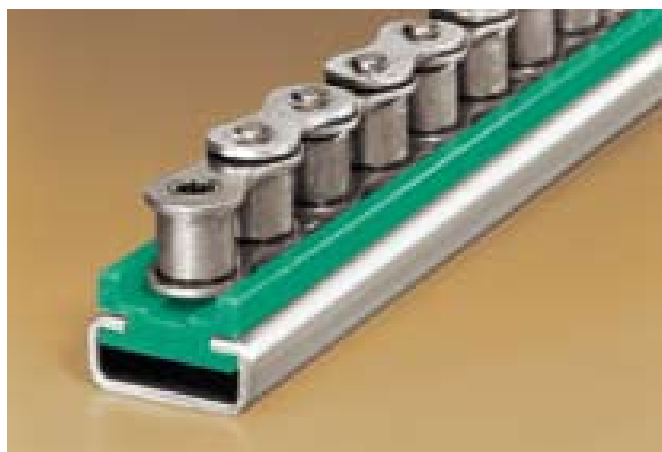


# TYPE CU



DIN 8187 chain no.	Chain dimensions in inches	C profile type	B1	B2	H	Hc	d2	g	h2	h3	Article no.	Availability
-	3/8" x 5/32"	C3	20	20	14	17	4	9.4	2.8	4.2	221 310 011 351 020 003	● ●
06B-1	3/8" x 7/32"	C3	20	20	14	17	4	9.4	2.8	4.2	221 310 013 351 020 003	○ ○
083-1	1/2" x 3/16"	C3	20	20	14	17	5	10.8	2.3	3.8	221 310 015 351 020 003	● ●
085-1	1/2" x 1/4"	C5	28	28	14	18	5	11.8	3.2	4.7	221 310 017 351 020 005	○ ○
g=12.8mm	1/2" x 1/4"	C5	28	28	14	18	5	12.8	3.5	5.0	221 310 019 351 020 005	○ ○
08B-1	1/2" x 5/16"	C1	20	24	10	11	5	12.8	3.5	5.0	221 310 012 351 020 001	● ●
-	5/8" x 1/4"	C5	24	28	12	18	6	15.4	3.6	5.2	221 310 021 351 020 005	● ●
10B-1	5/8" x 3/8"	C5	24	28	12	18	6	15.4	3.6	5.0	221 310 014 351 020 005	● ●
12B-1	3/4" x 7/16"	C5	24	28	12	18	7	17.0	3.9	5.7	221 310 016 351 020 005	● ●
16B-1	1" x 17mm	C9	33	38	20	30	10	24.0	8.4	10.6	221 310 018 351 020 009	● ●
20B-1	1 1/4" x 3/4"	C12	60	60	25	35	11	28.0	10.0	12.2	221 310 020 351 020 012	● ●
24B-1	1 1/2" x 1"	C12	60	60	30	40	16	36.6	13.0	16.0	221 310 022 351 020 012	● ●
28B-1	1 3/4" x 31mm	C12	65	60	38	45	17	40.0	16.0	18.0	221 310 023 351 020 012	○ ○
32B-1	2" x 31mm	C12	70	60	38	45	20	44.6	16.0	20.0	221 310 024 351 020 012	○ ○

● Stocked ○ Available within 10 days Dimensions in mm

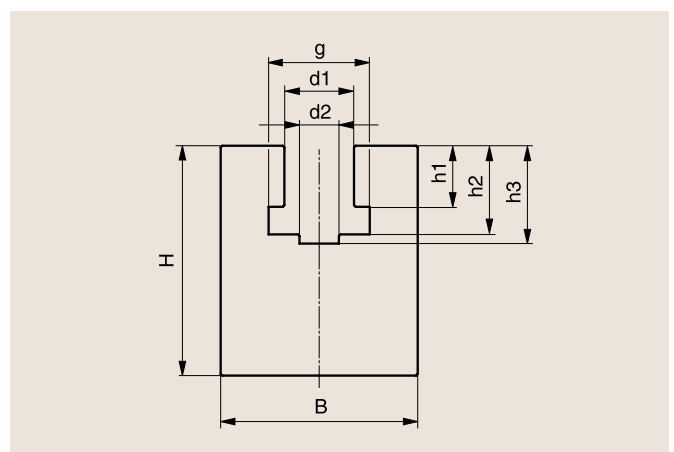


# TYPE K



DIN 8187 chain no.	Chain dimensions in inches	B	H	d1	d2	g	h1	h2	h3	Article no.	Availability
-	3/8" x 5/32"	20	25	6.6	4	9.4	3.6	7.0	8.0	221 110 026	○
06B-1	3/8" x 7/32"	20	25	6.6	4	9.4	5.5	8.9	10.0	221 110 027	●
083-1	1/2" x 3/16"	20	25	8.0	5	10.8	4.5	8.0	9.5	221 110 028	○
085-1	1/2" x 1/4"	24	30	8.0	5	11.8	6.2	9.8	11.3	221 110 029	○
g=12.8mm	1/2" x 1/4" *	24	30	8.8	5	12.8	6.2	10.2	11.7	221 110 030	○
08B-1	1/2" x 5/16"	24	30	8.9	5	12.8	7.4	11.5	13.0	221 110 031	●
-	5/8" x 1/4"	30	30	10.6	6	15.4	6.2	10.2	11.6	221 110 032	●
10B-1	5/8" x 3/8"	30	35	10.6	6	15.4	9.3	13.5	14.9	221 110 033	●
12B-1	3/4" x 7/16"	40	35	12.4	7	17.0	11.3	15.9	17.5	221 110 034	●
16B-1	1" x 17mm	40	45	16.4	10	24.0	16.0	25.7	27.7	221 110 035	●
20B-1	1 1/4" x 3/4"	50	50	20.0	11	28.0	18.0	29.5	31.7	221 110 036	●
24B-1	1 1/2" x 1"	60	60	27.0	16	36.6	24.0	38.2	41.2	221 110 037	●
28B-1	1 3/4" x 31mm	60	70	30.0	17	41.0	30.0	47.0	49.0	221 110 038	●
32B-1	2" x 31mm	70	75	31.0	19	44.6	30.0	47.3	50.0	221 110 039	○

● Stocked ○ Available within 10 days Dimensions in mm

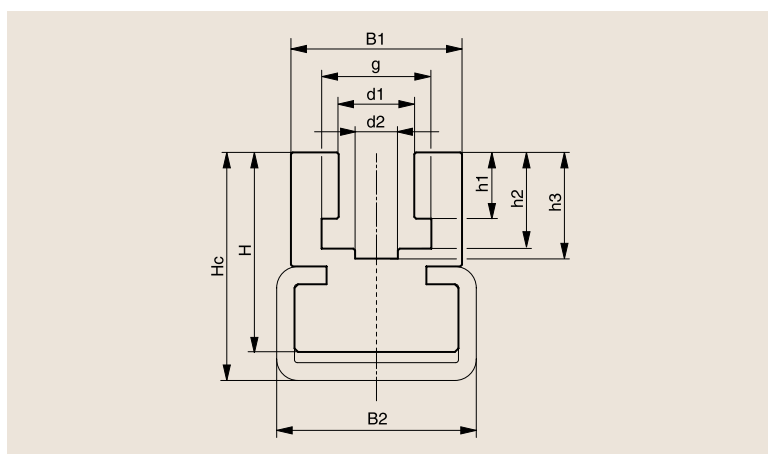


# TYPE CK



DIN 8187 chain no.	Chain dimensions in inches	C profile type	B1	B2	H	Hc	d1	d2	g	h1	h2	h3	Article no.	Availability
-	3/8" x 5/32"	C3	20	20	18	21	6.6	4	9.4	3.6	7.0	8.0	221 310 025 351 020 003	● ●
06B-1	3/8" x 7/32"	C3	20	20	18	21	6.6	4	9.4	5.5	8.9	10.0	221 310 026 351 020 003	● ●
083-1	1/2" x 3/16"	C3	20	20	18	21	8.0	5	10.8	4.5	8.0	9.5	221 310 027 351 020 003	○ ○
085-1	1/2" x 1/4"	C7	24	28	28	32	8.0	5	11.8	6.2	9.8	11.3	221 310 028 351 020 007	○ ○
g=12.8mm	1/2" x 1/4"	C7	24	28	28	32	8.8	5	12.8	6.2	10.2	11.7	221 310 029 351 020 007	○ ○
08B-1	1/2" x 5/16"	C7	24	28	28	32	8.9	5	12.8	7.4	11.5	13.0	221 310 030 351 020 007	● ●
-	5/8" x 1/4"	C7	24	28	28	32	10.6	6	15.4	6.2	10.2	11.6	221 310 031 351 020 007	○ ○
10B-1	5/8" x 3/8"	C7	24	28	28	32	10.6	6	15.4	9.3	13.5	14.9	221 310 032 351 020 007	● ●
12B-1	3/4" x 7/16"	C9	32	38	35	43	12.4	7	17.0	11.3	15.9	17.5	221 310 033 351 020 009	● ●
16B-1	1" x 17mm	C9	40	38	45	50	16.4	10	24.0	16.0	25.7	27.7	221 310 034 351 020 009	● ●
20B-1	1 1/4" x 3/4"	C12	60	60	50	55	20.0	11	28.0	18.0	29.5	31.7	221 310 035 351 020 012	○ ○
24B-1	1 1/2" x 1"	C12	60	60	60	65	27.0	16	36.6	24.0	38.2	41.2	221 310 036 351 020 012	○ ○
28B-1	1 3/4" x 31mm	C12	70	60	75	80	30.0	17	40.0	30.0	47.0	49.0	221 310 037 351 020 012	○ ○
32B-1	2" x 31mm	C12	70	60	75	80	31.0	19	44.6	30.0	47.3	50.0	221 310 038 351 020 012	○ ○

● Stocked ○ Available within 10 days Dimensions in mm

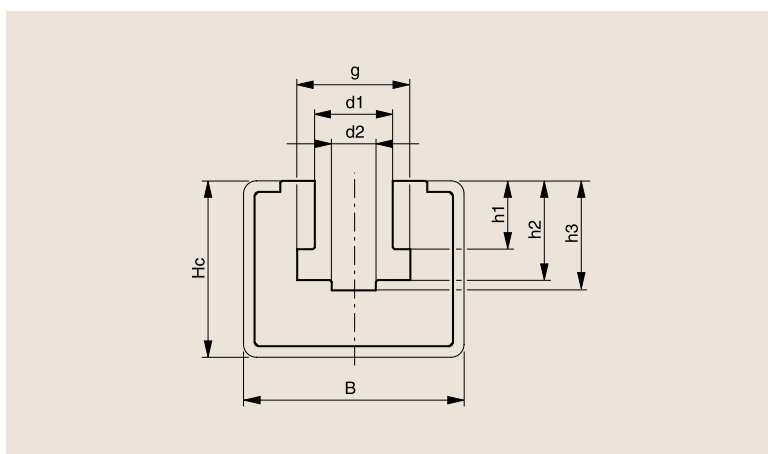


# TYPE CKG



DIN 8187 chain no.	Chain dimensions in inches	C profile type	B	Hc	d1	d2	g	h1	h2	h3	Article no.	Availability
-	3/8" x 5/32"	C10	30	24	6.6	4	9.4	3.6	7.0	8.0	221 410 001 351 020 010	● ●
06B-1	3/8" x 7/32"	C10	30	24	6.6	4	9.4	5.5	8.9	10.0	221 410 002 351 020 010	● ●
083-1	1/2" x 3/16"	C10	30	24	8.0	5	10.8	4.5	8.0	9.5	221 410 003 351 020 010	● ●
085-1	1/2" x 1/4"	C10	30	24	8.0	5	11.8	6.2	9.8	11.3	221 410 020 351 020 010	● ●
g=12.8mm	1/2" x 1/4"	C10	30	24	8.8	5	12.8	6.2	10.2	11.7	221 410 021 351 020 010	○ ○
08B-1	1/2" x 5/16"	C10	30	24	8.9	5	12.8	7.4	11.5	13.0	221 410 004 351 020 010	● ●
-	5/8" x 1/4"	C10	30	24	10.6	6	15.4	6.2	10.2	11.6	221 410 022 351 020 010	○ ○
10B-1	5/8" x 3/8"	C10	30	24	10.6	6	15.4	9.3	13.5	14.9	221 410 005 351 020 010	● ●
12B-1	3/4" x 7/16"	C10	30	24	12.4	7	17.0	11.3	15.9	17.5	221 410 006 351 020 010	● ●
16B-1	1" x 17mm	C11	45	40	16.4	10	24.0	16.0	25.7	27.7	221 410 007 351 020 011	● ●
20B-1	1 1/4" x 3/4"	C11	45	40	20.0	11	28.0	18.0	29.5	31.7	221 410 008 351 020 011	● ●
24B-1	1 1/2" x 1"	C13	65	55	27.0	16	36.6	24.0	38.2	41.2	221 410 009 351 020 013	● ●
28B-1	1 3/4" x 31mm	C13	65	60	30.0	17	41.0	30.0	47.0	49.0	221 410 010 351 020 013	○ ○
32B-1	2" x 31mm	C13	65	60	31.0	19	44.6	30.0	47.3	50.0	221 410 011 351 020 013	○ ○

● Stocked ○ Available within 10 days Dimensions in mm

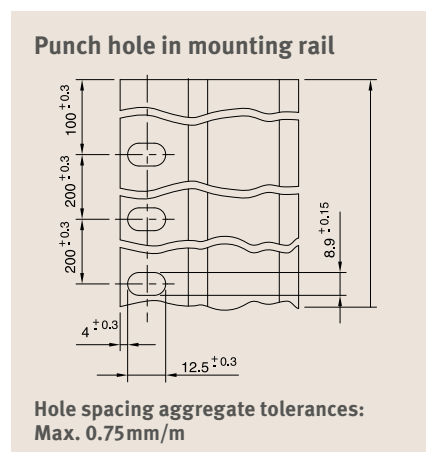
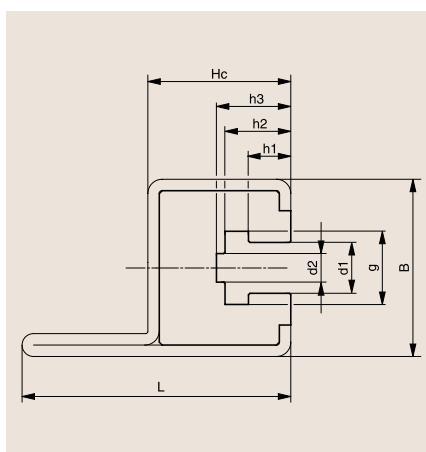


# TYPE CKG 14 H



DIN 8187 chain no.	Chain dimensions in inches	C profile type	B	Hc	L	d1	d2	g	h1	h2	h3	Article no.	Availability
-	3/8" x 5/32"	C14H	31	25	47	6.6	4	9.4	3.6	7.0	8.0	221 410 023 351 020 014	● ●
06B-1	3/8" x 7/32"	C14H	31	25	47	6.6	4	9.4	5.5	8.9	10.0	221 410 012 351 020 014	● ●
083-1	1/2" x 3/16"	C14H	31	25	47	8.0	5	10.8	4.5	8.0	9.5	221 410 024 351 020 014	● ●
085-1	1/2" x 1/4"	C14H	31	25	47	8.0	5	11.8	6.2	9.8	11.3	221 410 025 351 020 014	● ●
g=12.8mm	1/2" x 1/4"	C14H	31	25	47	8.8	5	12.8	6.2	10.2	11.7	221 410 026 351 020 014	● ●
08B-1	1/2" x 5/16"	C14H	31	25	47	8.9	5	12.8	7.4	11.5	13.0	221 410 013 351 020 014	● ●
-	5/8" x 1/4"	C14H	31	25	47	10.6	6	15.4	6.2	10.2	11.6	221 410 027 351 020 014	● ●
10B-1	5/8" x 3/8"	C14H	31	25	47	10.6	6	15.4	9.3	13.5	14.9	221 410 014 351 020 014	● ●
12B-1	3/4" x 7/16"	C14H	31	25	47	12.4	7	17.0	11.3	15.9	17.5	221 410 015 351 020 014	● ●

● Stocked ○ Available within 10 days Dimensions in mm

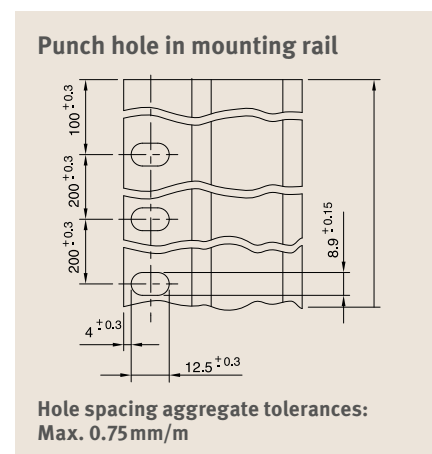
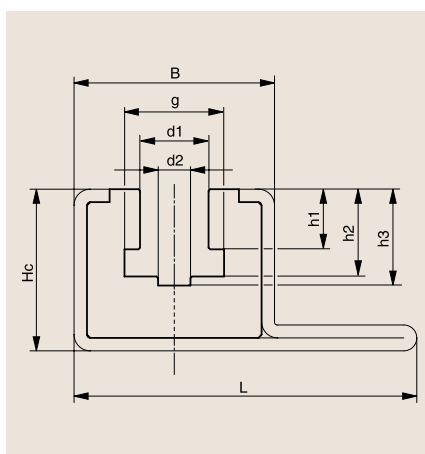


# TYPE CKG 15 V



DIN 8187 chain no.	Chain dimensions in inches	C profile type	B	Hc	L	d1	d2	g	h1	h2	h3	Article no.	Availability
-	3/8" x 5/32"	C15V	31	25	53	6.6	4	9.4	3.6	7.0	8.0	221 410 028 351 020 015	● ●
06B-1	3/8" x 7/32"	C15V	31	25	53	6.6	4	9.4	5.5	8.9	10.0	221 410 016 351 020 015	● ●
083-1	1/2" x 3/16"	C15V	31	25	53	8.0	5	10.8	4.5	8.0	9.5	221 410 029 351 020 015	● ●
085-1	1/2" x 1/4"	C15V	31	25	53	8.0	5	11.8	6.2	9.8	11.3	221 410 030 351 020 015	● ●
g=12.8mm	1/2" x 1/4"	C15V	31	25	53	8.8	5	12.8	6.2	10.2	11.7	221 410 031 351 020 015	● ●
08B-1	1/2" x 5/16"	C15V	31	25	53	8.9	5	12.8	7.4	11.5	13.0	221 410 017 351 020 015	● ●
-	5/8" x 1/4"	C15V	31	25	53	10.6	6	15.4	6.2	10.2	11.6	221 410 032 351 020 015	● ●
10B-1	5/8" x 3/8"	C15V	31	25	53	10.6	6	15.4	9.3	13.5	14.9	221 410 018 351 020 015	● ●
12B-1	3/4" x 7/16"	C15V	31	25	53	12.4	7	17.0	11.3	15.9	17.5	221 410 019 351 020 015	● ●

● Stocked ○ Available within 10 days Dimensions in mm

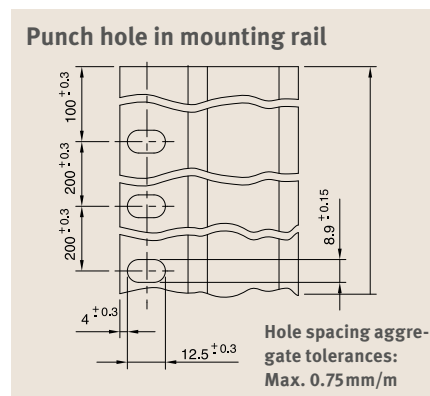
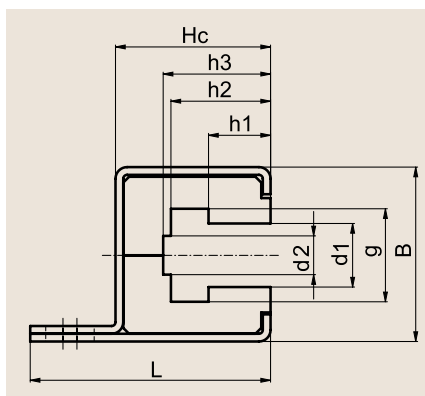


## TYPE CKG 16 H NEW!

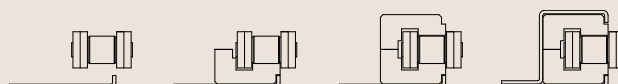


DIN 8187 chain no.	Chain dimensions in inches	C profile type	B	Hc	L	d1	d2	g	h1	h2	h3	Article no.	Availability
16B-1	1" x 17mm	C16H	45	40	62	16.4	10	24	16	25.7	27.7	221 410 033	●
												351 020 316	●
20B-1	1 1/4" x 3/4"	C16H	45	40	62	20.0	11	28	18	29.5	31.7	221 410 034	●
												351 020 316	●

● Stocked ○ Available within 10 days Dimensions in mm



For more info,  
see page 72

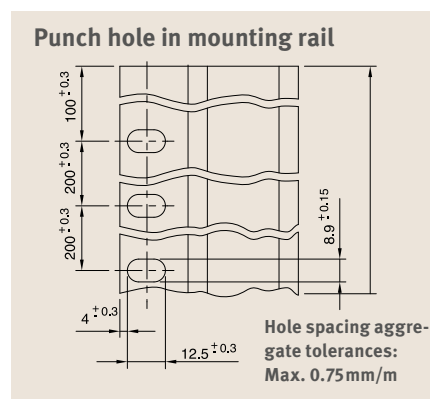
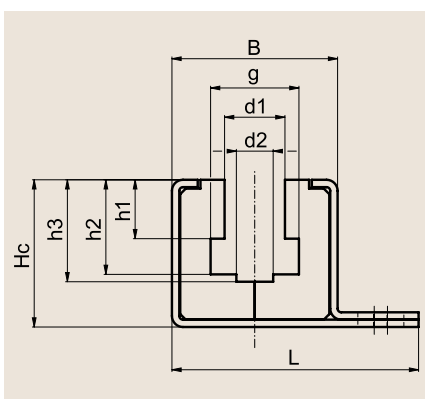


## TYPE CKG 17 V NEW!



DIN 8187 chain no.	Chain dimensions in inches	C profile type	B	Hc	L	d1	d2	g	h1	h2	h3	Article no.	Availability
16B-1	1" x 17mm	C17V	45	40	67	16.4	10	24	16	25.7	27.7	221 410 035	●
												351 020 317	●
20B-1	1 1/4" x 3/4"	C17V	45	40	67	20.0	11	28	18	29.5	31.7	221 410 036	●
												351 020 317	●

● Stocked ○ Available within 10 days Dimensions in mm



For more info,  
see page 72



# Double-Decker Guides for Roller Chains as per DIN 8187

TYPE ETA

"S"

DIN  
2768

2000

galvanized

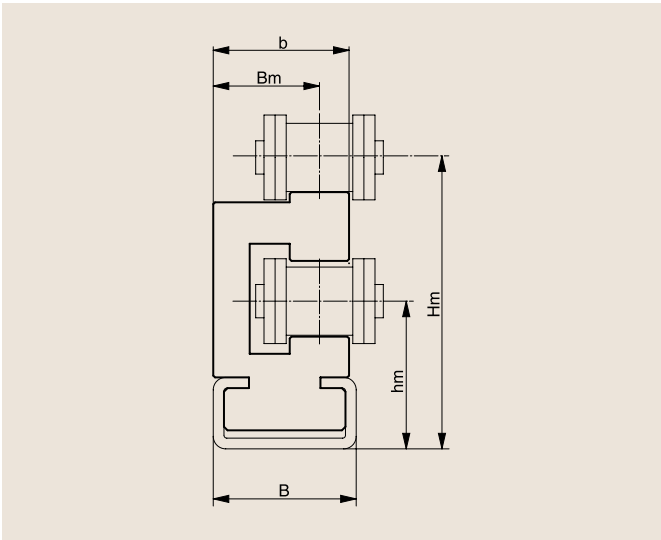
"S"  
1000

6000

V2A

DIN 8187 chain no.	Chain dimensions in inches	C profile type	B	H m	b	B m	hm	Article no.	Availability
06B-1	3/8" x 7/32"	C3	20	30.2	17	14.5	17	221 310 039 351 020 003	● ●
08B-1	1/2" x 5/16"	C3	20	33.8	20	16.5	18	221 310 040 351 020 003	● ●
10B-1	5/8" x 3/8"	C3	20	41.1	20	15.5	21	221 310 041 351 020 003	● ●
12B-1	3/4" x 7/16"	C5	28	46.5	24	18.5	24	221 310 042 351 020 005	● ●
16B-1	1" x 17mm	C9	38	62.0	33	25.0	34	221 310 043 351 020 009	○ ○

● Stocked    ○ Available within 10 days    Dimensions in mm



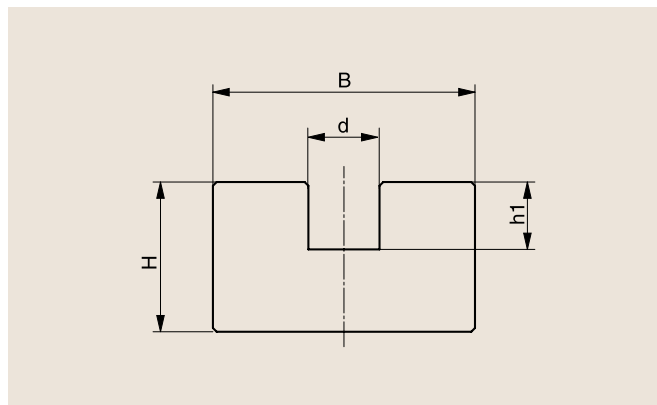
## Chain guides for round link chains as per DIN 766/764

### TYPE R



Nominal thickness d, DIN 766/764	B	H	d	h1	Article no.	Availability
6	30	15	7.0	7	231 010 001	●
8	38	20	9.0	9	231 010 002	●
10	45	25	11.5	11	231 010 003	●
13	55	30	15.0	15	231 010 004	●

● Stocked ○ Available within 10 days Dimensions in mm

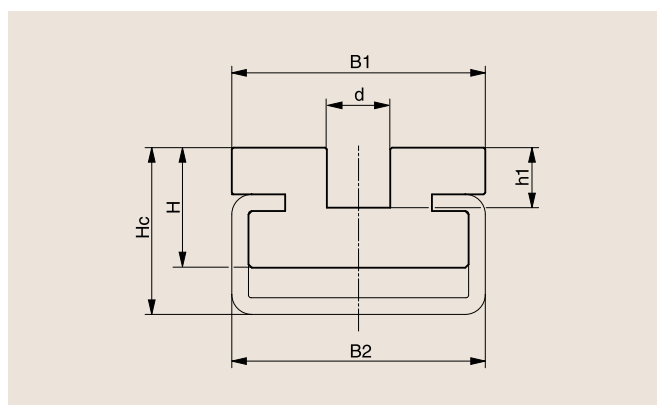
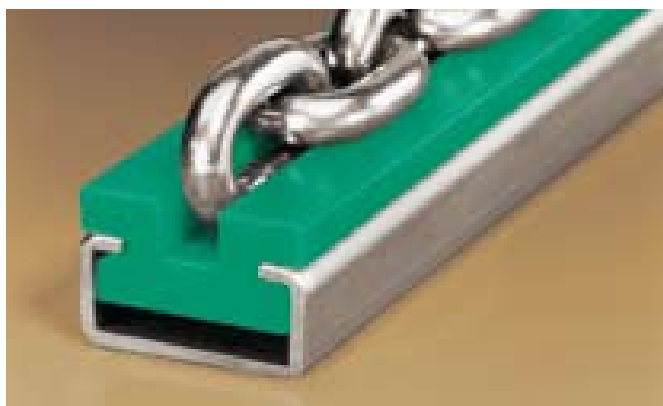


### TYPE CRU



Nominal thickness d, DIN 766/764	C profile type	B1	B2	H	Hc	d	h1	Article no.	Availability
6	C5	30	28	14	18	7.0	7	231 110 005 351 020 005	● ●
8	C9	38	38	18	25	9.5	9	231 110 006 351 020 009	● ●
10	C9	45	38	18	28	11.5	11	231 110 007 351 020 009	● ●
13	C12	60	60	25	33	15.0	15	231 110 008 351 020 012	● ●

● Stocked ○ Available within 10 days Dimensions in mm For round link chains that do not comply with DIN 766 or DIN 764 please specify dimensions.

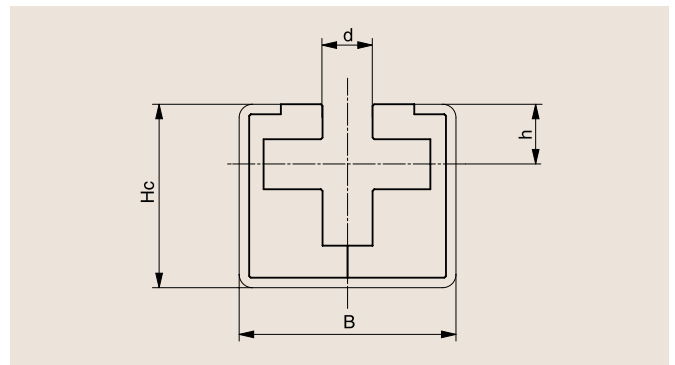


## TYPE CRG



Nominal thickness d. DIN 766/764	C profile type	B	Hc	d	h	Article no.	Availability
6	C11	45	40	7.0	8.0	231 110 009 351 020 011	●
8	C11	45	40	9.5	9.5	231 110 010 351 020 011	●
10	C13	65	55	11.5	14.0	231 110 011 351 020 013	●
13	C13	65	55	15.0	18.0	231 110 012 351 020 013	●

● Stocked ○ Available within 10 days Dimensions in mm

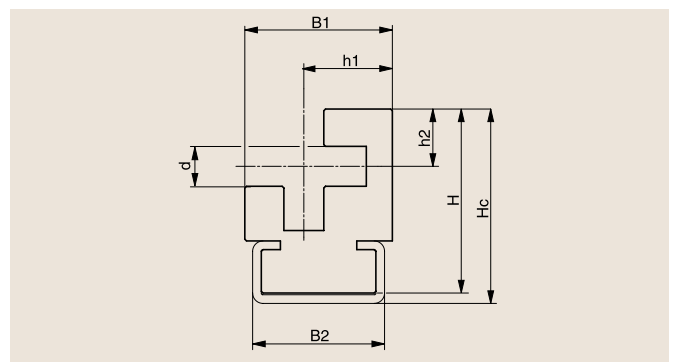


## TYPE CRO



Nominal thickness d. DIN 766/764	C profile type	B1	B2	H	Hc	d	h1	h2	Article no.	Availability
6	C3	27.0	20	32	34	7.0	17.5	10.5	231 110 001 351 020 003	●
8	C5	32.0	28	39	42	9.5	20.5	12.5	231 110 002 351 020 005	●
10	C9	42.5	38	53	56	11.5	25.5	16.5	231 110 003 351 020 009	●
13	C12	60.0	60	67	70	15.0	33.5	20.5	231 110 004 351 020 012	●

● Stocked ○ Available within 10 days Dimensions in mm For round link chains that do not comply with DIN 766 or DIN 764 please specify dimensions.



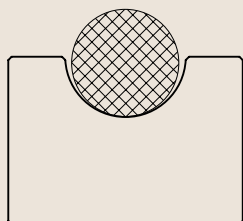
# OVERVIEW OF BELT GUIDES

## Plastic instead of metal

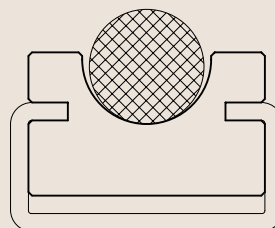
Belt guides made of metal cause a great deal of friction on the belts. By choosing a belt guide made of Material "S"<sup>®</sup> Black Antistatic, you considerably reduce this wear. In addition, you

save on drive energy thanks to the reduced static friction. Material "S"<sup>®</sup> Black Antistatic is suitable for use for round belts, V-belts, tooth belts and tracked tooth belts.

### For round belts

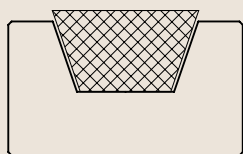


Type RR – page 101

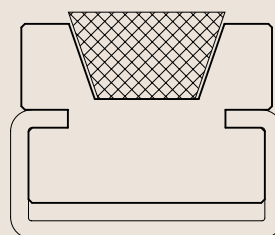


Type RRC – page 101

### For V-belts as per DIN 2215

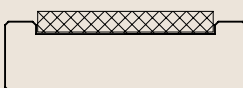


Type KR – page 102

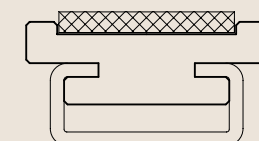


Type KRC – page 103

### For tooth belts

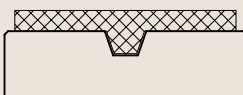


Type FR – page 104

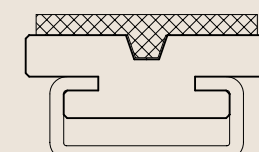


Type FRC – page 105

### For tracked tooth belts



Type FK – page 106



Type FKC – page 106

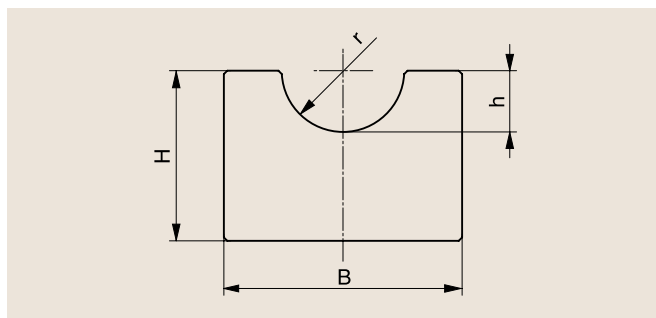
## Guides for Round Belts

### TYPE RR



Belt type/Ø	B	H	h	r	Article no.	Availability
5.0	20	10	3	3	231 010 027	●
6.3	20	10	4	4	231 010 028	●
8.0	20	12	5	5	231 010 029	●
9.5	25	15	6	6	231 010 030	●
12.5	28	20	8	7	231 010 031	●
15.0	33	25	10	9	231 010 032	●
18.0	38	25	12	10	231 010 033	●

● Stocked ○ Available within 10 days Dimensions in mm

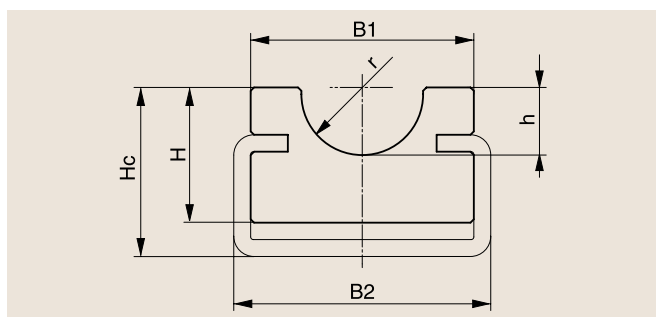


### TYPE RRC



Belt type/Ø	C profile type	B1	B2	H	Hc	h	r	Article no.	Availability
5.0	C3	20	20	10	15	3	3	231 110 035	●
								351 020 003	●
6.3	C3	20	20	15	18	4	4	231 110 036	●
								351 020 003	●
8.0	C3	20	20	15	18	5	5	231 110 037	●
								351 020 003	●
9.5	C5	25	28	15	20	6	6	231 110 038	●
								351 020 005	●
12.5	C5	28	28	15	20	8	7	231 110 039	●
								351 020 005	●
15.0	C9	33	38	20	25	10	9	231 110 040	●
								351 020 009	●
18.0	C9	38	38	20	25	12	10	231 110 041	●
								351 020 009	●

● Stocked ○ Available within 10 days Dimensions in mm



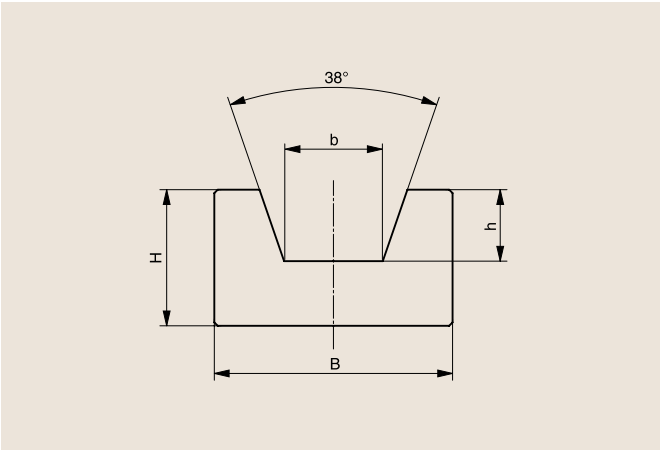
# Guides for V-belts as per DIN 2215

## TYPE KR



Belt type/b x h	B	H	b	h	Article no.	Availability
8 x 5	20	10	6.0	3.5	231 511 005	○
10 x 6	20	10	7.2	4.5	231 511 006	●
13 x 8	20	12	9.2	6.0	231 511 007	●
17 x 11	30	15	11.5	8.0	231 511 008	●
20 x 12.5	30	20	13.5	9.0	231 511 009	○
22 x 14	35	20	14.5	10.5	231 511 010	●
25 x 16	40	25	16.5	12.0	231 511 011	○
32 x 20	50	30	21.0	16.0	231 511 012	○
40 x 25	60	35	26.0	21.0	231 511 013	○

● Stocked    ○ Available within 10 days    Dimensions in mm

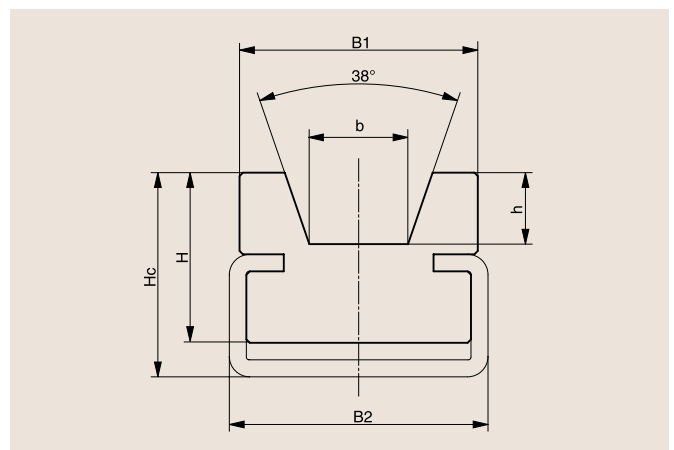


## TYPE KRC



Belt type/b x h	C profile type	B1	B2	H	Hc	b	h	Article no.	Availability
8 x 5	C3	20		10	15	6.0	3.5	231 110 013	●
			20					351 020 003	●
10 x 6	C3	20		15	18	7.2	4.5	231 110 014	●
			20					351 020 003	●
13 x 8	C5	25		18	22	9.2	6.0	231 110 015	●
			28					351 020 005	●
17 x 11	C5	30		18	24	11.5	8.0	231 110 016	●
			28					351 020 005	●
20 x 12.5	C5	30		18	24	13.5	9.0	231 110 017	●
			28					351 020 005	●
22 x 14	C9	35		25	30	14.5	10.5	231 110 018	●
			38					351 020 009	●
25 x 16	C9	40		25	32	16.5	12.0	231 110 019	●
			38					351 020 009	●
32 x 20	C12	60		35	40	21.0	16.0	231 110 020	●
			60					351 020 012	●
40 x 25	C12	60		35	40	26.0	21.0	231 110 021	●
			60					351 020 012	●

● Stocked ○ Available within 10 days Dimensions in mm



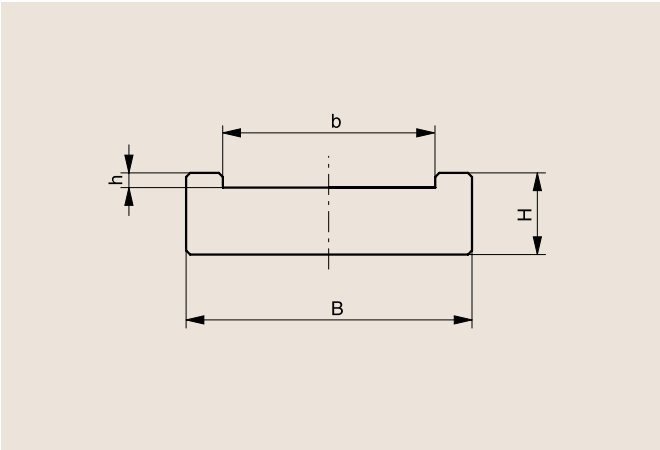
Guides for tooth belts

TYPE FR



Belt type	B	H	b	h	Article no.	Availability
25/T5	35	10	26	1.8	231 010 014	●
32/T5	45	12	33	1.8	231 010 015	●
25/T10	35	12	26	3.8	231 010 016	●
32/T10	45	12	33	3.8	231 010 017	●
50/T10	65	15	51	3.8	231 010 018	●
75/T10	90	15	76	3.8	231 010 019	●
100/T10	115	18	101	3.8	231 010 020	●

● Stocked    ○ Available within 10 days    Dimensions in mm

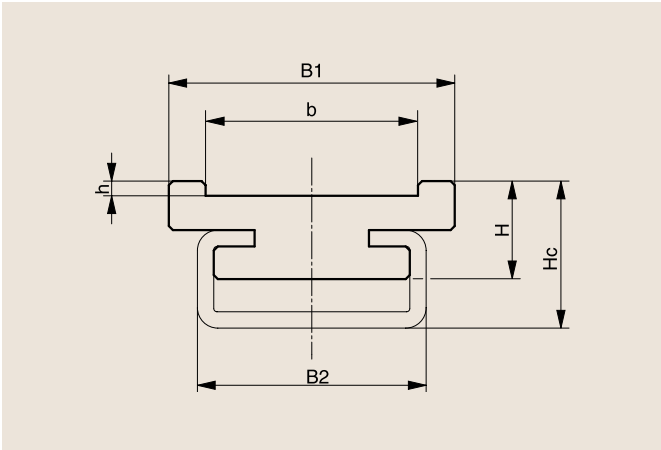


TYPE FRC



Belt type	C profile type	B1	B2	H	Hc	b	h	Article no.	Availability
25/T5	C5	35	28	12	18	26	1.8	231 110 022	●
								351 020 005	●
32/T5	C5	45	28	12	18	33	1.8	231 110 023	●
								351 020 005	●
25/T10	C5	35	28	15	20	26	3.8	231 110 024	●
								351 020 005	●
32/T10	C5	45	28	15	20	33	3.8	231 110 025	●
								351 020 005	●
50/T10	C4	65	50	18	20	51	3.8	231 110 026	●
								351 020 004	●
75/T10	C6	90	80	18	20	76	3.8	231 110 027	●
								351 020 006	●
100/T10	C6	115	80	18	20	101	3.8	231 110 028	●
								351 020 006	●

● Stocked    ○ Available within 10 days    Dimensions in mm



## Guides for tracked tooth belts

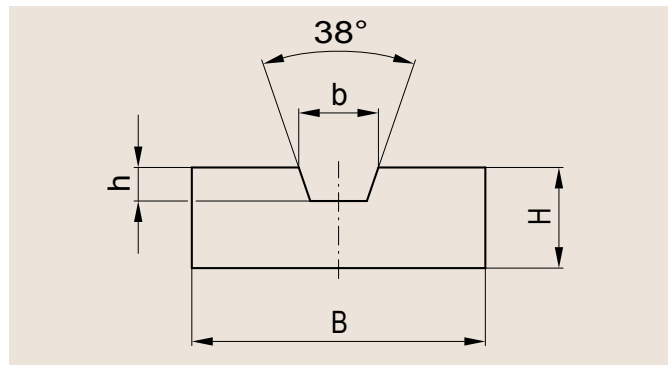
### TYPE FK



Belt type	B	H	b	h	Article no.	Availability
25/TK5	28	10	6.0	3.5	231 010 021	●
32/TK5	35	10	6.0	3.5	231 010 022	●
32/TK10*	35	12	9.5	4.0	231 010 023	●
50/TK10*	55	12	9.5	4.0	231 010 024	●
75/TK10	80	15	13.0	5.0	231 010 025	●
100/TK 10	105	15	13.0	5.0	231 010 026	●

● Stocked ○ Available within 10 days Dimensions in mm

\* Standard for V-profile 10 x6; specify any deviations!



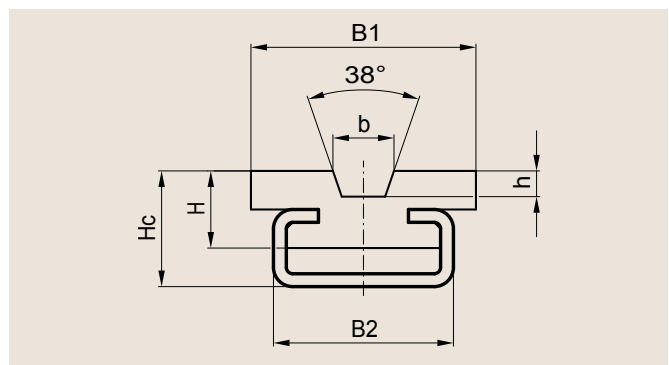
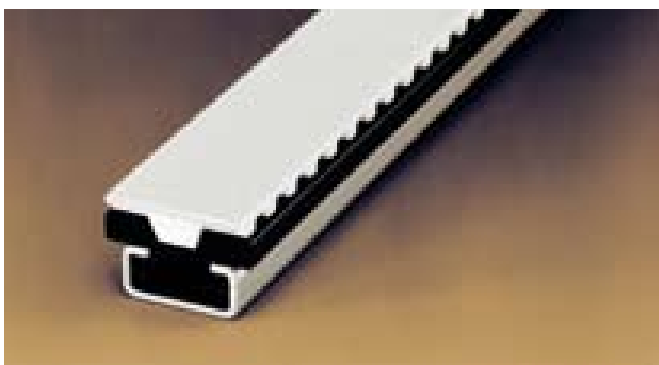
### TYPE FKC



Belt type	C profile type	B1	B2	H	Hc	b	h	Article no.	Availability
25/TK 5	C5	28		12	18	6.0	3.5	231 110 029	●
			28					351 020 005	●
32/TK 5	C5	35		12	18	6.0	3.5	231 110 030	●
			28					351 020 005	●
32/TK10*	C5	35		12	18	9.5	4.0	231 110 031	●
			28					351 020 005	●
50/TK10*	C4	55		15	18	9.5	4.0	231 110 032	●
			50					351 020 004	●
75/TK10	C6	80		15	18	13.0	5.0	231 110 033	●
			80					351 020 006	●
100/TK10	C6	105		15	18	13.0	5.0	231 110 034	●
			80					351 020 006	●

● Stocked ○ Available within 10 days Dimensions in mm

\* Standard for V-profile 10 x6; specify any deviations!



# SNAP-TRICK®

## The click connection trick

Aluminium profile systems are often used in conveying, production, and assembly machines. It takes a lot of effort to achieve a reliable connection with chain and belt guides. However, SNAP-TRICK® makes this easy!

The “profile with the click” has a variable connection element that is made of Material Murytal® C Natural. This enables the combination of Murtfeldt chain and belt guide profiles with any aluminium profile system. SNAP TRICK® is suitable for use with the system profiles of practically all well-known manufacturers.

### Materials

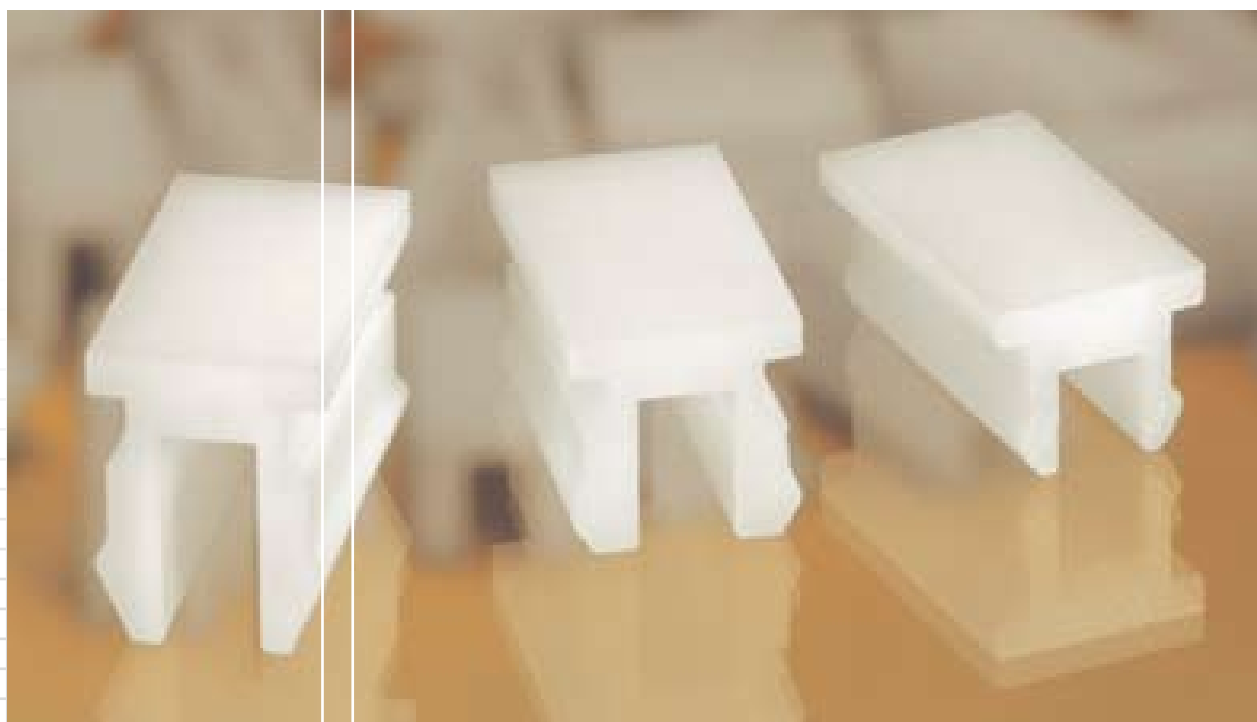
- Original Material “S”® Black Antistatic
- We can deliver other slide materials on request

### Lengths

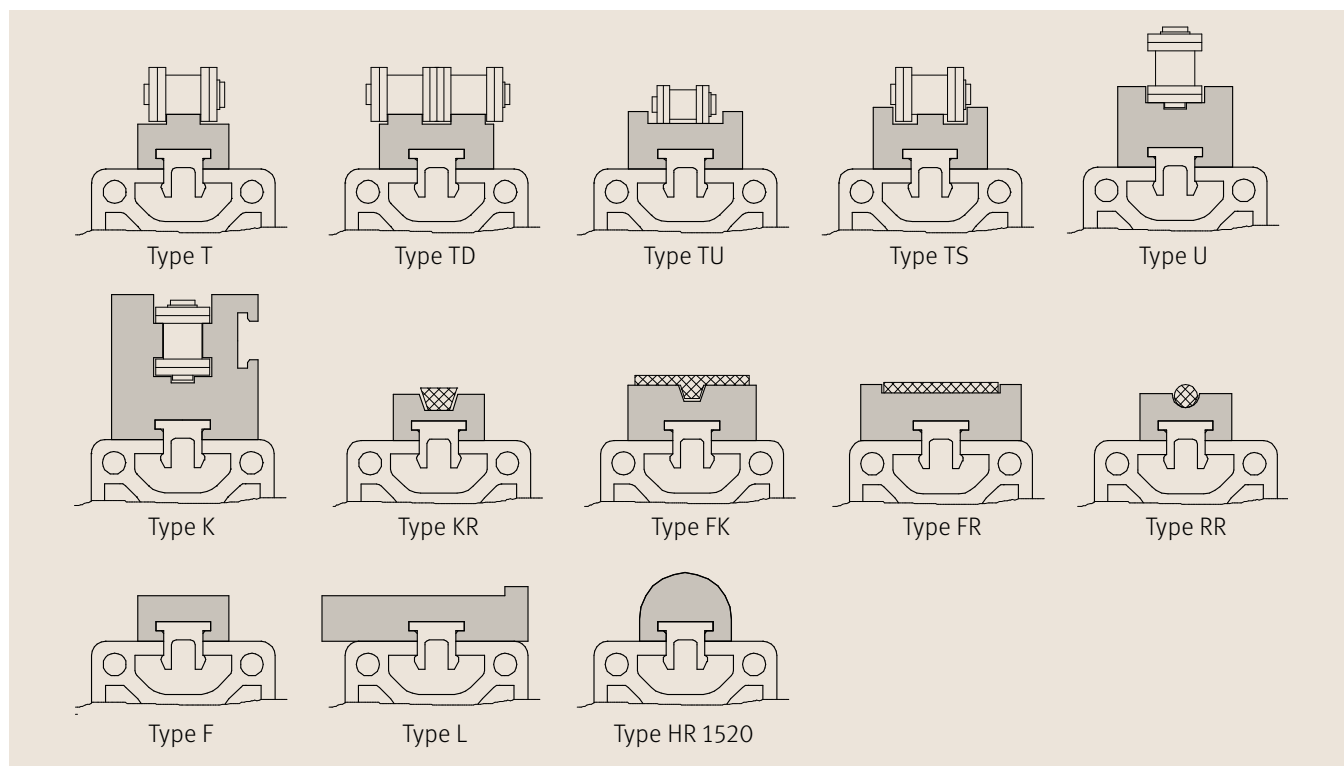
- Usually delivered in 2 m lengths
- If required, we can cut smaller parts from our standard lengths or manufacture longer one-piece guides
- Five SNAPS are supplied for every metre of profile length

### Advantages of SNAP-TRICK® profiles

- Click connection provides quick assembly
- No tool required
- Profiles can be replaced by clicking the click connection – there is no need to pull profiles along the entire groove length
- Special SNAP variants enable attachment to flat surfaces without a groove
- The advantages of our standard range can be used without limitation



## OVERVIEW OF TYPES FOR SELECTION



## SNAP FOR ALL SCENARIOS

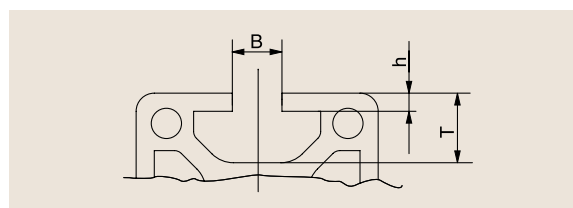
### Overview of manufacturer compatibility

Always state the correct article number for your requirements. You receive 5 SNAPS free-of-charge for each metre of profile length. Regardless of the manufacturer, all SNAPS can be used as long as their B, T, and h dimensions (see below) match your groove dimensions. For article numbers for separate SNAP orders, see below. Customer orders: Send us the dimensions of your profile as a CAD drawing and state the profile manufacturer (see sketch). We are also happy to determine the appropriate choice of SNAP on the basis of a sample provided by you.

**We will be pleased to send you a detailed PDF on our SNAP-TRICK® selection on request.**

### Example order

- Item 1 221 511 005 2 m chain guides (2,000mm) for chain 08 B-1 incl. free SNAP S5 (221 539 105)
- Item 2 221 530 105 1 bag of 50 SNAP S5 (additional)



SNAP	Quantity	Profile system manufacturers (examples)	Groove width B	Min. groove depth T	Side thickness (h)	Article no.
S1	50	ITEM. Paletti	5.0	6.0	1.8	221 530 101
S2	50	ITEM. Paletti	6.2	6.0	3.0	221 530 102
S3	50	ITEM. MiniTec (F). Paletti	8.0	11.0	4.5	221 530 103
S4	50	Bosch. MayTec. R+K	6.2	5.0	2.0	221 530 104
S5	50	Bauer. Bosch. MayTec	8.0	6.0	2.2	221 530 105
S6	50	R+K	10.2	8.0	4.5	221 530 106
S7	50	Bauer. Bosch	10.0	11.0	6.0	221 530 107
S8	50	R+K	10.2	10.0	7.0	221 530 108
S9	50	Paletti. MiniTec	8.2	6.0	2.5	221 530 109
S10	50	MK	6.2	6.5	2.0	221 530 110
S11	50	MK	10.3	12.0	3 (4)	221 530 111
S12	50	MayTec	8.2	12.5	4.0	221 530 112
S13	50	MayTec	8.2	11.5	3.0	221 530 113

# PROFILES FOR CONVEYING AND TRANSPORTATION

In the beverage, packaging, food, and frozen food sectors in particular, goods and products must be transported in a reliable manner that protects them from damage. We offer a wide range of products to meet this requirement.

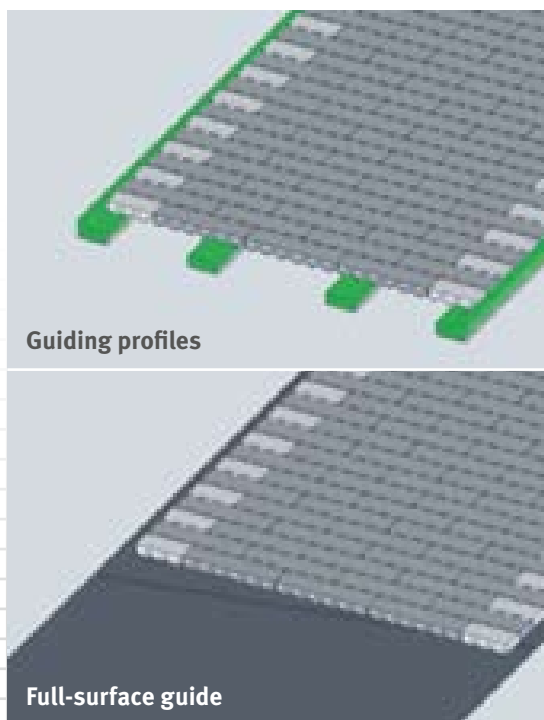
We are happy to manufacture products on the basis of your drawings to meet the demands of your custom conveying and transport tasks. For example, we can produce carriers and work piece bearers for your conveyor belts. You can also obtain accessories such as switches and star wheels quickly and economically and in line with your requirements.

Please contact our application technology department or one of our field staff. You can also join our consultants at an online conference where you can work together on your documents in real time.

**For information on the required access software for online collaboration, see [www.murtfeldt.com](http://www.murtfeldt.com).**

## **We offer the following products for conveying/transportation technology:**

- Sliding guides
- Rail guides
- Bands
- Clip-on profiles
- Profiles for slat band chains
- Curve guides for slat band chains



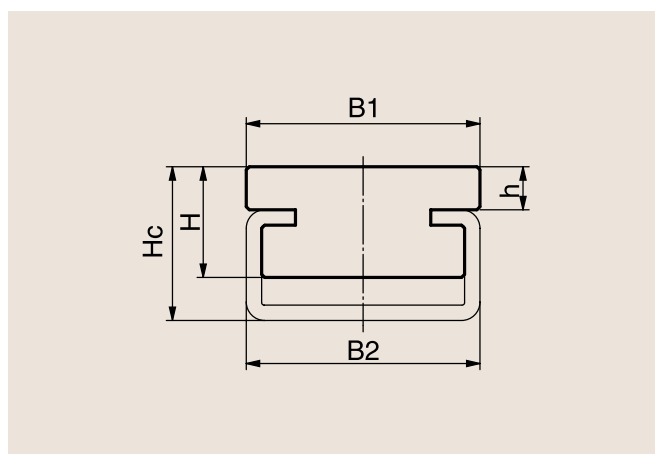
## Sliding guides

### SLIDING GUIDES TYPE CF



Type	C profile type	B1	B2	H	Hc	h	Article no.	Availability
CF	C1	20	24	5	6	1.0	211 010 001	●
							351 020 001	●
CF	C1	20	24	10	11	5.8	211 010 002	●
							351 020 001	●
CF	C3	20	20	10	14	4.0	211 010 003	●
							351 020 003	●
CF	C3	20	20	14	17	7.0	211 010 004	●
							351 020 003	●
CF	C3	20	20	16	20	10.0	211 010 005	●
							351 020 003	●
CF	C5	28	28	10	15	3.0	211 010 006	●
							351 020 005	●
CF	C5	28	28	14	18	6.0	211 010 007	●
							351 020 005	●
CF	C9	38	38	12	22	4.0	211 010 008	●
							351 020 009	●
CF	C9	38	38	18	25	7.0	211 010 009	●
							351 020 009	●
CF	C12	60	60	20	30	10.0	211 010 010	●
							351 020 012	●
CF <b>NEW!</b>	C4	50	50	18	20	10.0	211 010 011	○
							351 020 004	●
CF <b>NEW!</b>	C6	80	80	18	20	10.0	211 010 012	○
							351 020 006	●

● Stocked ○ Available within 10 days Dimensions in mm



# RAIL GUIDES

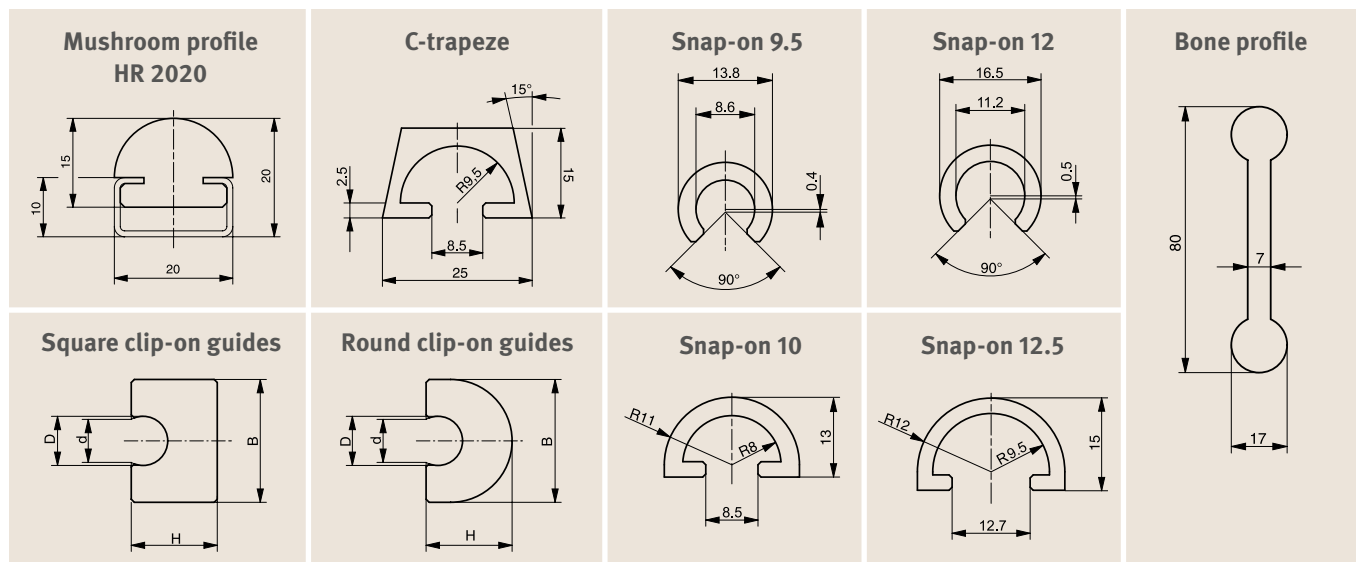
## As insertion and clip profiles



Rail profile	Delivery form	Delivery length in mm	Production method	Original Material "S"®	Article no.	Availability
Mushroom profile HR 2020	Profile	2000	Milled	Green	211 210 001	●
	C3	2000			351 020 003	●
	Profile	2000	Milled	Black antistatic	211 210 002	●
	C3	2000			351 020 003	●
	Profile	2000	Extruded	Green	211 210 003	●
	C3	2000			351 020 003	●

Rail profile	Delivery form	Delivery length in m	Production method	Original Material "S"®	Article no.	Availability
C-Trapez	Profile	2	Extruded	Natural	211 310 049	●
Snap-on 9.5	Roll	50	Extruded	Natural	211 310 045	●
Snap-on 12	Roll	50	Extruded	Natural	211 310 046	●
Snap-on 10	Roll	50	Extruded	Natural	211 310 047	●
Snap-on 12.5	Roll	50	Extruded	Natural	211 310 048	●
Bone profile	Profile	6	Extruded	Green	211 310 028	●
				Black	211 310 027	●

Clip-on rails for round steel bars	Dimensions H/B/d	Delivery length in mm	Production method	Original Material "S"®	Article no.	Availability
Square for round steel bar <b>D=8mm</b>	14/20/7.0	2000	Milled	Green	211 410 001	●
				Black antistatic	211 410 004	●
Square for round steel bar <b>D=10mm</b>	16/22/8.5	2000	Milled	Green	211 410 002	●
				Black antistatic	211 410 005	●
Square for round steel bar <b>D=12mm</b>	18/24/10	2000	Milled	Green	211 410 003	●
				Black antistatic	211 410 006	●
Round for round steel bar <b>D= 8mm</b>	14/20/7.0	2000	Milled	Green	211 410 007	●
				Black antistatic	211 410 010	●
Round for round steel bar <b>D=10mm</b>	16/22/8.5	2000	Milled	Green	211 410 008	●
				Black antistatic	211 410 011	●
Round for round steel bar <b>D= 12mm</b>	18/24/10	2000	Milled	Green	211 410 009	●
				Black antistatic	211 410 012	●



● Stocked ○ Available within 10 days Dimensions in mm Extruded profiles made of Material "S"® Black are **not** antistatic.

\* For milled profiles. Tolerances as per DIN 16941 for extruded profiles.

# BANDS



Murtfeldt plastic bands are ideally suited for transporting sensitive goods. They are available in three standard sizes. Intermediate and special dimensions are available on request.

We are happy to advise you on the correct choice of band. Please contact us.

## Design

- Either in Original Material "S"® Green or Original Material "S"® Black Antistatic
- On request: Pre-treatment in the form of scraping and flaming on one side for later adhesion

## Special designs

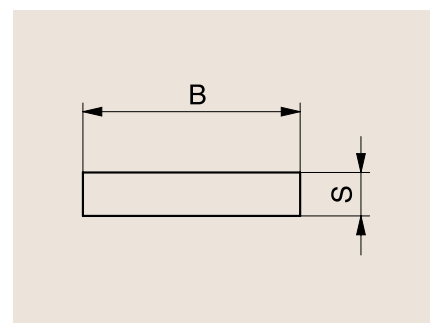
- Extruded bands
- 6, 8 and 10mm in widths of between 10 and 60mm

## Applications

- Beverage, packaging, food, and frozen food sectors

## Special properties

- Extremely good wear resistance
- High shock and impact resistance



## Bands made from Original Material "S"®

Width (B) x thickness (S)	Article no.
15 x 3	171 010 007
18 x 3	171 010 008
20 x 3	171 010 009
22 x 3	171 010 010
25 x 3	171 010 011
30 x 3	171 010 012
35 x 3	171 010 013
40 x 3	171 010 014
45 x 3	171 010 016
50 x 3	171 010 017
60 x 3	171 010 019
70 x 3	171 010 020
80 x 3	171 010 021
90 x 3	171 010 023
100 x 3	171 010 024
111 x 3	171 010 025

Width (B) x thickness (S)	Article no.
20 x 4	171 010 026
25 x 4	171 010 027
30 x 4	171 010 028
40 x 4	171 010 030
50 x 4	171 010 032

Width (B) x thickness (S)	Article no.
15 x 5	171 010 034
18 x 5	171 010 035
20 x 5	171 010 036
22 x 5	171 010 037
25 x 5	171 010 038
30 x 5	171 010 039
35 x 5	171 010 040
40 x 5	171 010 041
45 x 5	171 010 042
50 x 5	171 010 043
60 x 5	171 010 044

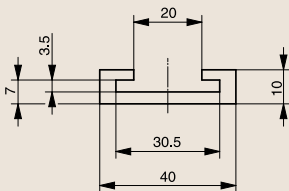
\* Calculated at full price per metre. Tolerances: Thickness  $\pm 0.1$  / width  $\pm 0.5$ . Roll length on request

# SLIP-ON PROFILES

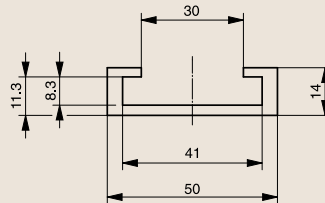


Rail profile	Length	Production method	Original Material "S"®	Article no.	Availability
Plastic C profile	2000	Milled	Green	211 310 016	●
for flat steel, 30 x 3	2000	Milled	Black antistatic	211 310 020	●
Plastic C profile	2000	Extruded	Green	211 310 024	●
for flat steel, 30 x 3					
Plastic C profile	2000	Milled	Green	211 310 014	●
for flat steel, 40 x 8	2000	Milled	Black antistatic	211 310 018	●
Plastic C profile	3000	Extruded	Black	211 310 025	●
for flat steel, 40 x 8					
Plastic C profile	2000	Milled	Green	211 310 022	●
for flat steel, 40 x 10	2000	Milled	Black antistatic	211 310 023	●
Plastic C profile	2000	Extruded	Black	211 310 021	●
for flat steel, 40 x 10					
Plastic C profile	2000	Milled	Green	211 310 013	●
for flat steel, 50 x 6	2000	Milled	Black antistatic	211 310 017	●
Plastic C profile	3000	Extruded	Natural	211 310 026	○
for flat steel, 50 x 6					
Plastic C profile	2000	Milled	Green	211 310 015	●
for flat steel, 40 x 8	2000	Milled	Black antistatic	211 310 019	●

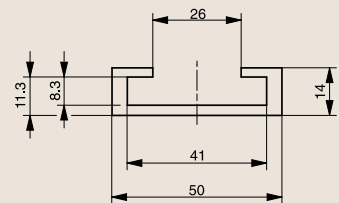
**For flat steel, 30 x 3  
milled/extruded**



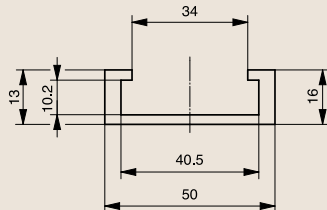
**For flat steel, 40 x 8  
milled**



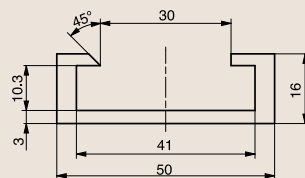
**For flat steel, 40 x 8  
extruded**



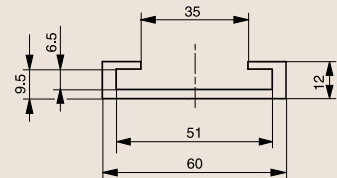
**For flat steel, 40 x 10  
milled**



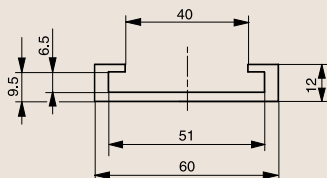
**For flat steel, 40 x 10  
extruded**



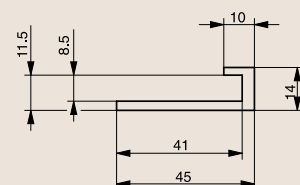
**For flat steel, 50 x 6  
milled**



**For flat steel, 50 x 6  
extruded**



**Plastic L profile  
For flat steel, 40 x 8  
milled**



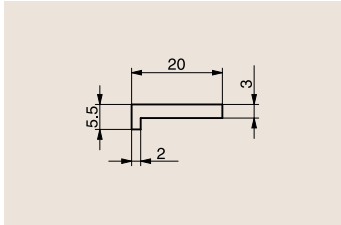
● Stocked ○ Available within 10 days Dimensions in mm Extruded profiles made of Material "S"® Black are **not** antistatic.

\* For milled profiles. Tolerances as per DIN 16941 for extruded profiles.

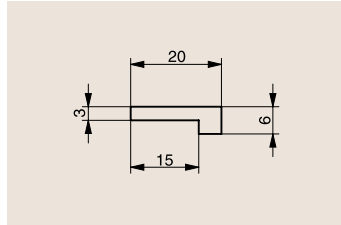
# PROFILES FOR SLAT BAND CHAINS



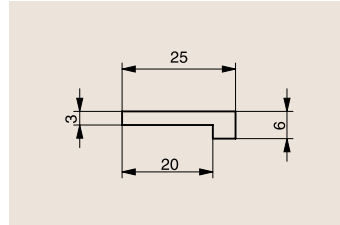
**L profile 20 x 5.5**



**L profile 20 x 6**

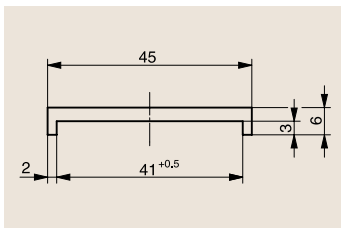


**L profile 25 x 6**

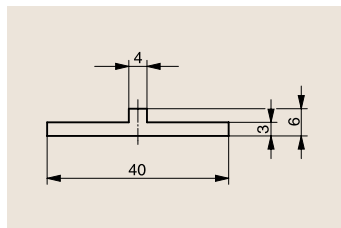


Profile	Roll length (in m)	Production method	Original Material "S"®	Article no.	Availability
L profile 20 x 5.5	35	Milled	Green	211 310 034	●
	50	Extruded	Green	211 310 044	●
L profile 20 x 6	45	Milled	Green	211 310 035	●
L profile 25 x 6	45	Milled	Green	211 310 036	●

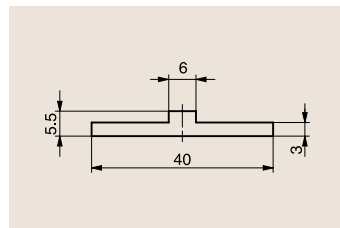
**Slide profile type U, 45 x 6**



**Centre profile, 40 x 6**

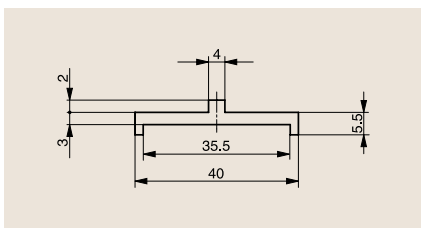


**Centre profile, 40 x 5.5**

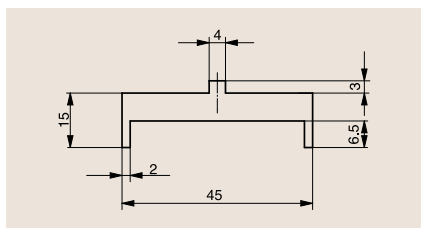


Profile	Roll length (in m)	Production method	Original Material "S"®	Article no.	Availability
Slide profile type U, 45 x 6	35	Milled	Green	211 310 037	●
Centre profile, 40 x 6	35	Milled	Green	211 310 033	●
	50	Extruded	Green	211 310 042	●
Centre profile, 40 x 5.5	50	Extruded	Green	211 310 001	●

**Bridge centre profile, 40 x 7.5**



**Bridge centre profile, 45 x 18**

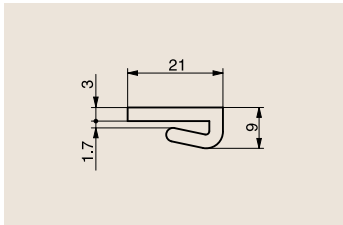


Profile	Roll length (in m)	Production method	Original Material "S"®	Article no.	Availability
Bridge centre profile, 40 x 7.5	50	Extruded	Green	211 310 043	●
Bridge centre profile, 45 x 18	6	Extruded	Green	211 310 002	●

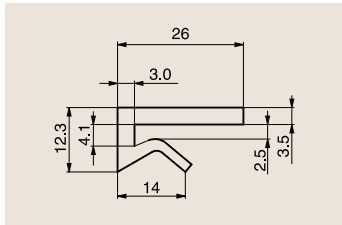
● Stocked ○ Available within 10 days Dimensions in mm Extruded profiles made of Material "S"® Black are **not** antistatic.

\* For milled profiles. Tolerances as per DIN 16941 for extruded profiles.

Flat clamping profile, 21 x 9

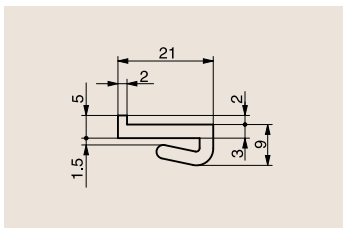


Flat clamping profile, 26 x 12.3

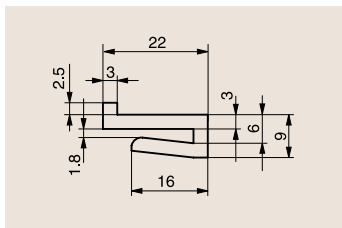


Profile	Roll length (in m)	Production method	Original Material™S™®	Article no.	Availability
Flat clamping profile, 21 x 9	50	Extruded	Green	211 310 004	●
Flat clamping profile, 26 x 12.3	30	Extruded	Natural	211 310 039	●

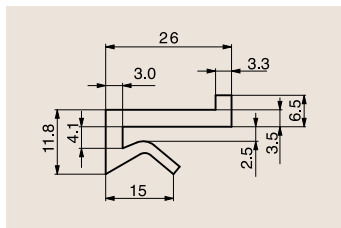
L clamping profile, 21 x 11



L clamping profile, 22 x 11.5

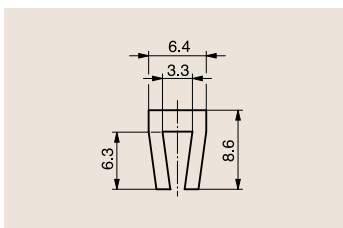


L clamping profile, 26 x 12.3

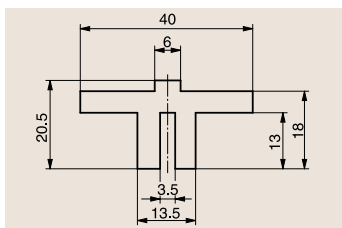


Band profile	Roll length (in m)	Production method	Original Material™S™®	Article no.	Availability
L clamping profile, 21 x 11	50	Extruded	Green	211 310 005	●
L clamping profile, 22 x 11.5	65	Extruded	Green	211 310 041	●
L clamping profile, 26 x 12.3	30	Extruded	Natural	211 310 040	●

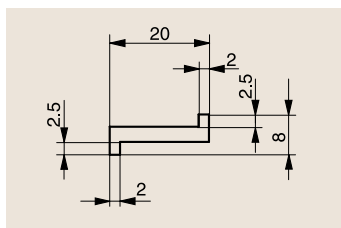
Clamping U profile, 6.4 x 8.6



T clip-on profile, 40 x 20.5



Z profile, 20 x 8



Profile	Roll length (in m)	Production method	Original Material™S™®	Article no.	Availability
Clamping U profile, 6.3 x 8.7	50	Extruded	Natural	211 310 007	●
T clip-on profile, 40 x 20.5	2	Milled	Green	211 310 030	●
Z profile, 20 x 8	35	Milled	Green	211 310 031	●
	50	Extruded	Green	211 310 038	●

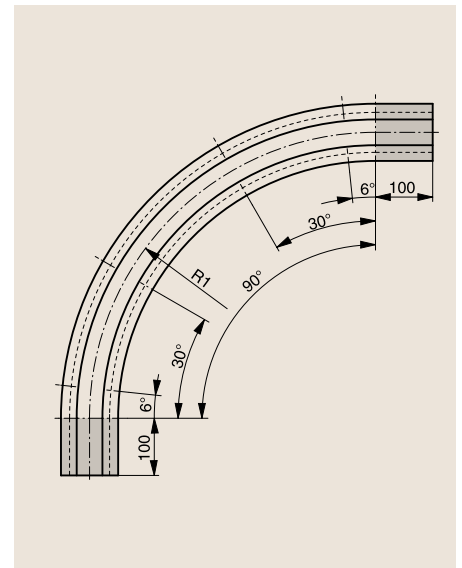
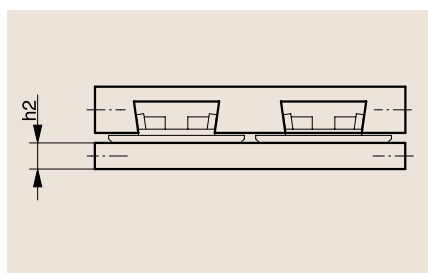
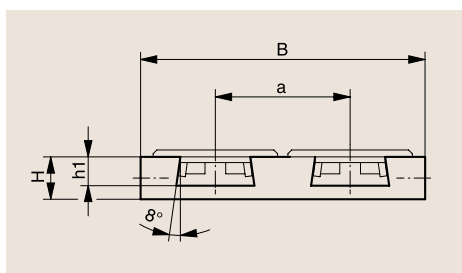
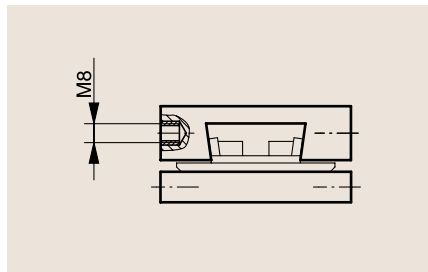
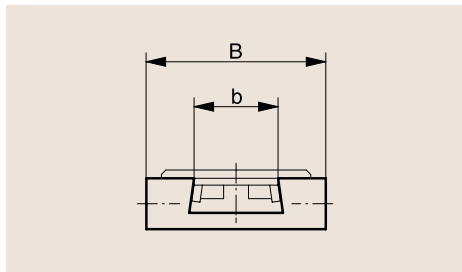
# CURVE GUIDES FOR SLAT BAND CHAINS



90° standard curve guides for slat band chains  
with dovetail guide, with and without straight ends

Selection table

Guide no. with straight ends	Guide no. without straight ends	For chain type	No. of guideways	B	a	R1	b1	H	h1	h2	Article no. with straight ends	Article no. without straight ends	Avail- ability
S500/1GE	S500/1	SS881-K325	1	100	90	500	41.3	25	17	16	321 020 051	321 020 001	○
S500/2GE	S500/2		2	190							321 020 052	321 020 002	○
S500/3GE	S500/3		3	280							321 020 053	321 020 003	○
S500/4GE	S500/4		4	370							321 020 054	321 020 004	○
S500/5GE	S500/5		5	460							321 020 055	321 020 005	○
S500/6GE	S500/6		6	550							321 020 056	321 020 006	○
S860/1GE	S860/1	LF880-K325	1	100	90	860	41.3	25	17	16	321 020 057	321 020 021	○
S860/2GE	S860/2	D880-K325	2	190							321 020 058	321 020 022	○
S860/3GE	S860/3	D880-K325	3	280							321 020 059	321 020 023	○
S860/4GE	S860/4		4	370							321 020 060	321 020 024	○
S860/5GE	S860/5		5	460							321 020 061	321 020 025	○
S610/1GE	S610/1	SS881-K450	1	125	120	610	41.3	25	17	16	321 020 062	321 020 007	○
S610/2GE	S610/2	SSC881-K450	2	245							321 020 063	321 020 008	○
S610/3GE	S610/3	SSC8811-K450	3	365							321 020 064	321 020 009	○
S610/4GE	S610/4	D880-K450	4	485							321 020 065	321 020 010	○
S610/1GE	S610/1	SS881-K750	1	200	195	610	41.3	25	17	16	321 020 066	321 020 011	○
S610/2GE	S610/2		2	395							321 020 067	321 020 012	○
S610/3GE	S610/3		3	590							321 020 068	321 020 013	○
S610/1GE	S610/1	LF882-K450	1	125	120	610	58.0	27	21	16	321 020 069	321 020 014	○
S610/2GE	S610/2		2	245							321 020 070	321 020 015	○
S610/3GE	S610/3		3	365							321 020 071	321 020 016	○
S610/1GE	S610/1	LF882-K750	1	200	195	610	58.0	27	21	16	321 020 072	321 020 017	○
S610/2GE	S610/2		2	395							321 020 073	321 020 018	○
S610/1GE	S610/1	LF882-K1000	1	265	260	310	58.0	27	21	16	321 020 074	321 020 019	○
S610/1GE	S610/1	LF882-K1200	1	320	310						321 020 075	321 020 020	○



● Stocked ○ Available within 10 days Dimensions in mm

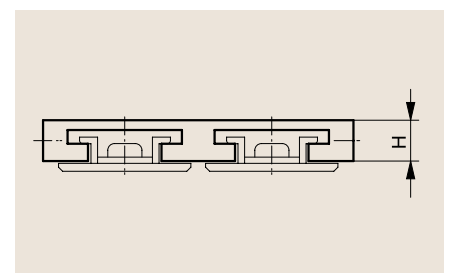
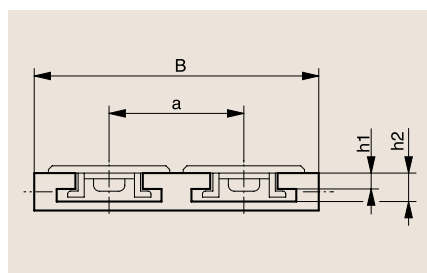
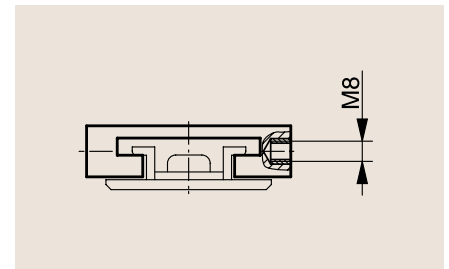
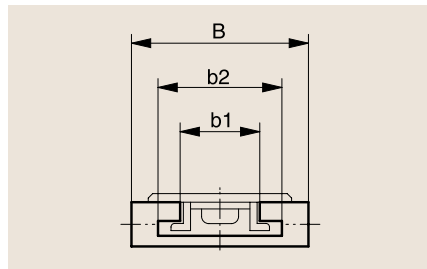
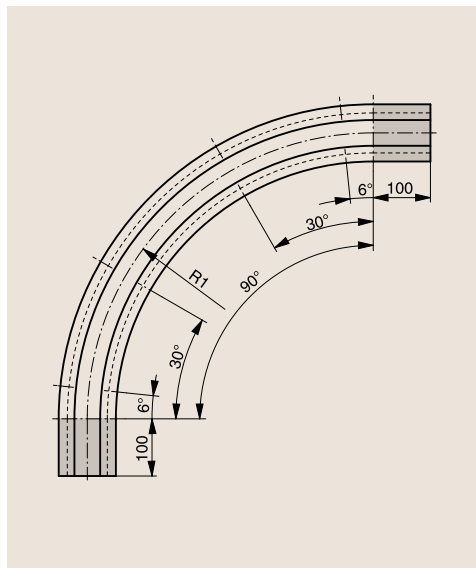
# CURVE GUIDES FOR SLAT BAND CHAINS



90° standard curve guides for slat band chains  
with TAB guide, with and without straight ends

Selection table

Guide no. with straight ends	Guide no. without straight ends	For chain type	No. of guide- ways	B	a	R1	b1	b2	H	h1	h2	Article no. with straight ends	Article no. without straight ends	Avail- ability
T500/1GE	T500/1	SS881TAB-K325	1	100	90	500	45	70	25	10.6	19	321 020 076	321 020 026	○
T500/2GE	T500/2		2	190								321 020 077	321 020 027	○
T500/3GE	T500/3		3	280								321 020 078	321 020 028	○
T500/4GE	T500/4		4	370								321 020 079	321 020 029	○
T500/5GE	T500/5		5	460								321 020 080	321 020 030	○
T500/6GE	T500/6		6	550								321 020 081	321 020 031	○
T860/1GE	T860/1	SSC8811TAB-K325	1	100	860	860	45	70	25	10.6	19	321 020 082	321 020 046	○
T860/2GE	T860/2	LF880TAB-K325	2	190								321 020 083	321 020 047	○
T860/3GE	T860/3	LF880TAB-K325	3	280								321 020 084	321 020 048	○
T860/4GE	T860/4		4	370								321 020 085	321 020 049	○
T860/5GE	T860/5		5	460								321 020 086	321 020 050	○
T610/1GE	T610/1	SS881TAB-K450	1	125	120	610	58	90	32	16	26	321 020 087	321 020 032	○
T610/2GE	T610/2	SSC881 TAB-K450	2	245								321 020 08	321 020 033	○
T610/3GE	T610/3	SSC8811TAB-K450	3	365								321 020 089	321 020 034	○
T610/4GE	T610/4	LF880TAB-K450	4	485								321 020 090	321 020 035	○
T610/1GE	T610/1	SS881 TAB-K750	1	200	195	610	58	90	32	16	26	321 020 091	321 020 036	○
T610/2GE	T610/2	SSC881TAB-K750	2	395								321 020 092	321 020 037	○
T610/3GE	T610/3	SSC8811TAB-K750	3	590								321 020 093	321 020 038	○
T610/1GE	T610/1	LF882TAB-K450	1	125	120	610	58	90	32	16	26	321 020 094	321 020 039	○
T610/2GE	T610/2		2	245								321 020 095	321 020 040	○
T610/3GE	T610/3		3	365								321 020 096	321 020 041	○
T610/1GE	T610/1	LF882TAB-K750	1	200	195	610	58	90	32	16	26	321 020 097	321 020 042	○
T610/2GE	T610/2		2	395	196							321 020 098	321 020 043	○
T610/1GE	T610/1	LF882TAB-K1000	1	265	260	610	58	90	32	16	26	321 020 099	321 020 044	○
T610/1GE	T610/1	LF882TAB-K1200	1	320	310							321 020 100	321 020 045	○



● Stocked ○ Available within 10 days Dimensions in mm

# CHAIN RACKS

**Good value, flexible, and robust**

Our chain racks have more than proven themselves as an economical alternative to milled racks. The system is characterized by ease of installation and simple adjustment, and is attached using an anchor plate at one end and a clamping set at the other end.

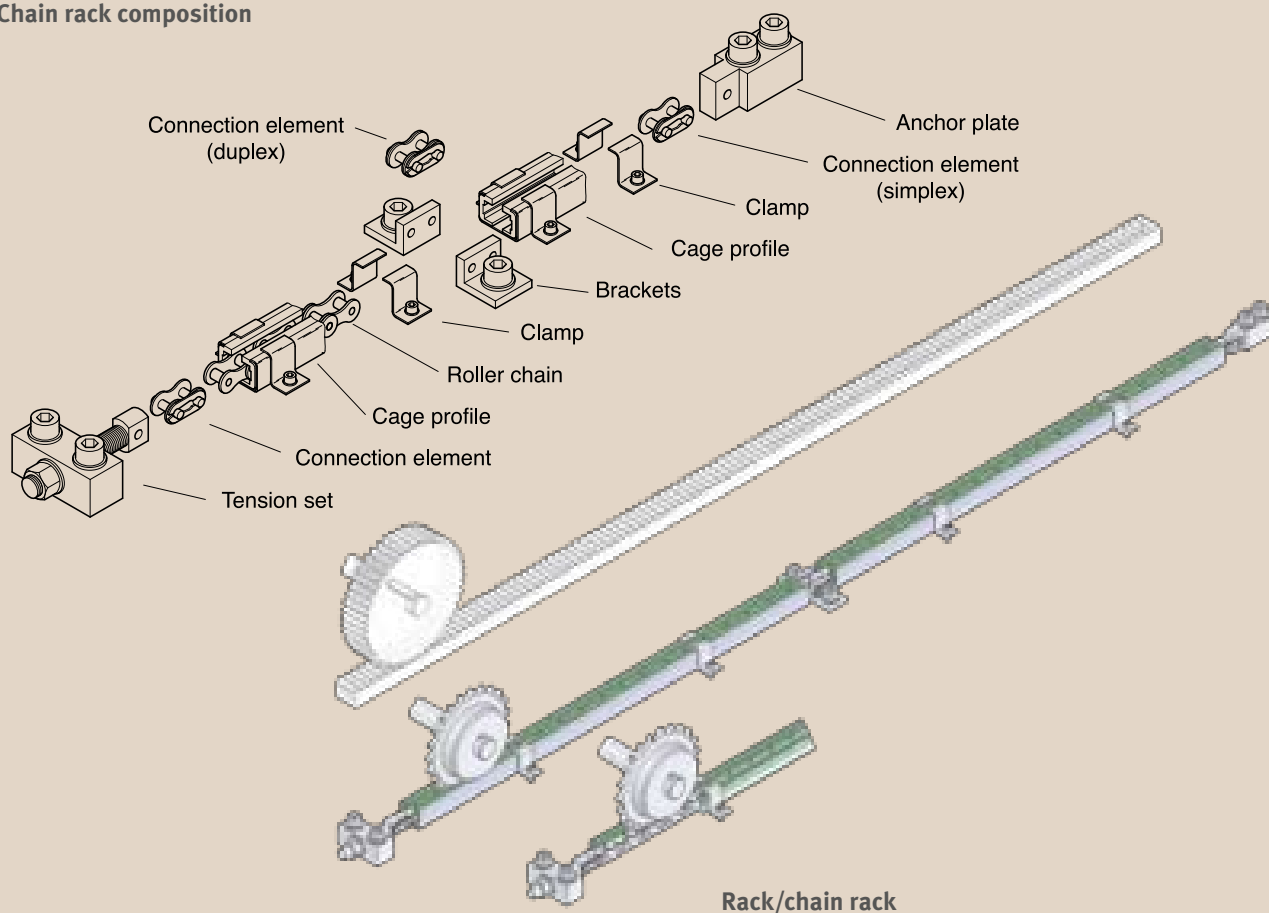
## Design

The clamping set is connected with the actual chain rack using a simplex chain connecting link. The chain is guided using a cage profile made of Material "S"<sup>®</sup>1000 Green. This is clasped by a steel C profile from the outside. The steel C profiles are fixed to the base using clamps. For chain lengths of more than 2,500mm, fastening brackets are also provided. They are integrated into the rack using duplex connection elements. This prevents the chain rack from moving in the cage profile during start-up and deceleration. Chain racks are available in chain sizes of  $\frac{1}{2}$ ",  $\frac{5}{8}$ ",  $\frac{3}{4}$ " and 1".

## Advantages

- Less sensitive to tooth backlash changes. Alignment errors can thus be corrected through smaller sprocket widths
- High level of acoustic insulation
- High stability
- Cage profile can expand if temperature varies
- Simple assembly
- Economical alternative to milled racks

## Chain rack composition



### Full speed ahead – the tangential force on the sprocket

The correct choice of sprocket is vital in order to ensure the optimum flow of forces and maximum durability of your components. To keep the contact ratio as favourable as possible, the sprocket must have lantern gear toothing. 15 is recommended as the minimum number of teeth. The optimum value is  $\geq 19$ .

For all necessary information on calculating values for your chain racks, see the “Products” section of our Web site. We are happy to provide you with personalized advice. Please contact us.

DIN 8187 chain no.	Chain dimensions in inches	Clamping nut fastening torque	Clearance between tooth base and chain roller	Max. tangential force*
08B-1	$\frac{1}{2}'' \times \frac{5}{16}''$	3 – 5Nm	0.3 – 0.5mm	2700N
10B-1	$\frac{5}{8}'' \times \frac{3}{8}''$	3 – 8Nm	0.3 – 0.5mm	3300N
12B-1	$\frac{3}{4}'' \times \frac{7}{16}''$	8 – 13Nm	0.3 – 0.6mm	4300N
16B-1	1" x 17mm	22 – 30Nm	0.4 – 0.8mm	9000N

\*The specified tangential forces in the table of values are maximum values. These values should not be exceeded by more than 25% when the starting/braking torque is taken into account.

### Example order for lengths up to 2,500mm

**Chain rack,  $\frac{5}{8}''$   
for effective length of 1,700mm,  
Sprocket teeth = 19 or:  
Chain rack consisting of the following:**

- 1 cage profile,  $\frac{5}{8}''$ , 1,800mm in length
- 1 tension set
- 1 anchor plate
- 2 pairs of clamps
- 1 ISO no. 10B roller chain, 115 links long,  
inner link on both sides (40% pre-stretched)
- 2 straight connection elements, simplex,  
ISO-no. 10B

Our application technology department will be pleased to help you to choose the correct chain racks and will gladly answer any design questions you may have.

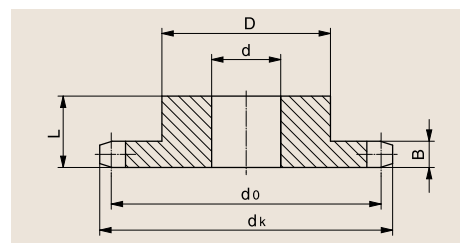
### Example order for lengths of more than 2,500mm

**Chain rack  $\frac{3}{4}''$   
for effective length of 3,800mm,  
Chain wheel teeth Z = 21 or:  
Chain rack consisting of the following:**

- 2 cage profiles,  $\frac{3}{4}''$ , 1,937mm in length
- 1 tension set
- 1 anchor plate
- 4 pairs of clamps
- 1 pair of mounting brackets
- 2 ISO no. 12B roller chains, each 103 links long,  
inner link on both sides (40% pre-stretched)
- 2 straight connection elements, simplex,  
ISO-no. 12B
- 1 straight connection element, duplex,  
ISO-no. 12B-duplex

## PRODUCT RANGE

Product name	Unit	½" / 08B-1 12.7mm article no.	⅝" (10B-1) 15.9mm article no.	¾" (12B-1) 19.05mm article no.	1" (16B-1) 25.4mm article no.
Tension set	Piece	353 010 004	353 010 009	353 010 014	353 010 019
Anchor plate	Piece	353 010 005	353 010 010	353 010 015	353 010 020
Mounting bracket	1 pair	353 010 003	353 010 008	353 010 013	353 010 018
Clamps	1 pair	353 010 001	353 010 001	353 010 002	353 010 002
Chain rack profile, "S"® 1000, fixed length	Piece	221 320 144	221 320 145	221 320 146	221 320 147
Steel C profile, galvanized, fixed length	Piece	351 090 010	351 090 010	351 090 011	351 090 011
Connection element, simplex	Piece	353 010 006	353 010 011	353 010 016	353 010 021
Connection element, duplex	Piece	353 010 007	353 010 012	353 010 017	353 010 022



### Standard sprocket product range

DIN 8187 chain no.	No. of teeth Z	Pitch circle Ø d <sub>0</sub>	Tip circle Ø d <sub>k</sub>	Hub		Tooth width B	Bore hole d	Article no.	Availability
				D	L				
08B-1	15	60.64	69.1	30.5	25	6.3	10	354 020 001	○
	17	68.72	77.2	38.5	25	6.3	12	354 020 002	○
	19	76.81	85.3	46.5	25	6.3	12	354 020 003	○
	21	84.89	93.4	54.5	25	6.3	16	354 020 004	○
	23	92.98	101.4	63.0	25	6.3	16	354 020 005	○
10B-1	15	75.80	85.9	45.5	25	8.0	12	354 020 006	○
	17	85.90	96.0	55.5	25	8.0	16	354 020 007	○
	19	96.01	106.1	66.0	25	8.0	16	354 020 008	○
	21	106.12	116.2	76.0	25	8.0	16	354 020 009	○
	23	116.22	126.3	86.0	25	8.0	16	354 020 010	○
12B-1	15	90.96	103.0	45.0	35	9.5	16	354 020 011	○
	17	103.08	115.1	57.0	35	9.5	20	354 020 012	○
	19	115.21	127.3	69.0	35	9.5	20	354 020 013	○
	21	127.34	139.4	81.0	35	9.5	20	354 020 014	○
	23	139.47	151.5	93.0	35	9.5	20	354 020 015	○
16B-1	15	121.28	137.1	75.0	40	14.0	20	354 020 016	○
	17	137.45	153.3	91.0	40	14.0	20	354 020 017	○
	19	153.62	169.5	107.0	40	14.0	20	354 020 018	○
	21	169.79	185.6	123.0	40	14.0	25	354 020 019	○
	23	185.96	201.8	140.0	40	14.0	25	354 020 020	○

○ Available within 10 days      Dimensions in mm

You can calculate the correct chain racks required at [www.murtfeldt.com](http://www.murtfeldt.com).